

For Research Use Only

# ERCC6L2 Polyclonal antibody, PBS Only

Catalog Number:27028-1-PBS



## Basic Information

<b>Catalog Number:</b> 27028-1-PBS	<b>GenBank Accession Number:</b> BC140702	<b>Purification Method:</b> Protein A purification
<b>Source:</b> Rabbit	<b>GeneID (NCBI):</b> 375748	
<b>Isotype:</b> IgG	<b>UNIPROT ID:</b> Q5T890	
<b>Immunogen Catalog Number:</b> AG19348	<b>Full Name:</b> chromosome 9 open reading frame 102	
	<b>Calculated MW:</b> 712 aa, 81 kDa	
	<b>Observed MW:</b> 70-80 kDa	

## Applications

**Tested Applications:**  
WB, IHC, Indirect ELISA

**Species Specificity:**  
human

## Background Information

ERCC6L2, also known as RAD26L or C9orf102 belongs to the SNF2/RAD54 helicase family and is expressed in bone marrow. C9orf102 may be involved in early DNA damage response. C9orf102 is phosphorylated by NEK6. C9orf102 exists some isoforms with the molecular weight 177, 80, 60, 40 kDa.

## Storage

**Storage:**  
Store at -80°C.  
**The product is shipped with ice packs. Upon receipt, store it immediately at -80°C**

**Storage Buffer:**  
PBS only, pH7.3

For technical support and original validation data for this product please contact:

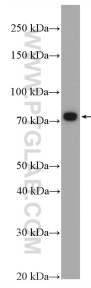
T: 4006900926

E: Proteintech-CN@ptglab.com

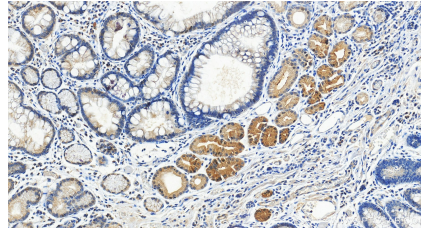
W: ptgcn.com

**This product is exclusively available under Proteintech Group brand and is not available to purchase from any other manufacturer.**

## Selected Validation Data



PC-3 cells were subjected to SDS PAGE followed by western blot with 27028-1-AP (ERCC6L2 antibody) at dilution of 1:600 incubated at room temperature for 1.5 hours. This data was developed using the same antibody clone with 27028-1-PBS in a different storage buffer formulation.



Immunohistochemical analysis of paraffin-embedded human stomach cancer tissue slide using 27028-1-AP (ERCC6L2 antibody) at dilution of 1:1000 (under 20x lens). Heat mediated antigen retrieval with Tris-EDTA buffer (pH 9.0). This data was developed using the same antibody clone with 27028-1-PBS in a different storage buffer formulation.