

For Research Use Only

LPIN1 Polyclonal antibody

Catalog Number: 27026-1-AP

Featured Product

7 Publications



Basic Information

Catalog Number:

27026-1-AP

Size:

300 µg/ml

Source:

Rabbit

Isotype:

IgG

Immunogen Catalog Number:

AG25815

GenBank Accession Number:

BC030537

GeneID (NCBI):

23175

UNIPROT ID:

Q14693

Full Name:

lipin 1

Calculated MW:

890 aa, 99 kDa

Observed MW:

110-130 kDa

Purification Method:

Antigen affinity purification

Recommended Dilutions:

WB 1:2000-1:8000

IP 0.5-4.0 µg for 1.0-3.0 mg of total protein lysate

IHC 1:250-1:1000

Applications

Tested Applications:

WB, IP, IHC, ELISA

Cited Applications:

WB

Species Specificity:

human

Cited Species:

human, mouse, pig

Note-IHC: suggested antigen retrieval with TE buffer pH 9.0; (*) Alternatively, antigen retrieval may be performed with citrate buffer pH 6.0

Positive Controls:

WB : A549 cells, LNCaP cells

IP : LNCaP cells,

IHC : human liver cancer tissue,

Background Information

Notable Publications

Author	Pubmed ID	Journal	Application
Holly Merta	34852214	Dev Cell	WB
Shuhua Shan	32657580	J Agric Food Chem	WB
Mengting Chen	39330833	Toxins (Basel)	WB

Storage

Storage:

Store at -20°C. Stable for one year after shipment.

Storage Buffer:

PBS with 0.02% sodium azide and 50% glycerol pH 7.3.

Aliquoting is unnecessary for -20°C storage

For technical support and original validation data for this product please contact:

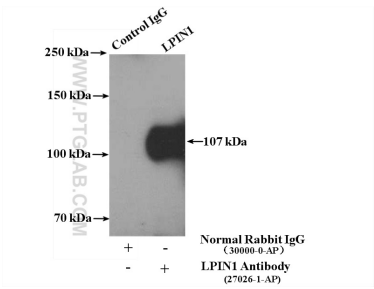
T: 4006900926

E: Proteintech-CN@ptglab.com

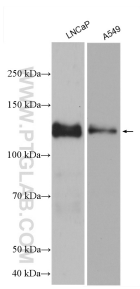
W: ptgcn.com

This product is exclusively available under Proteintech Group brand and is not available to purchase from any other manufacturer.

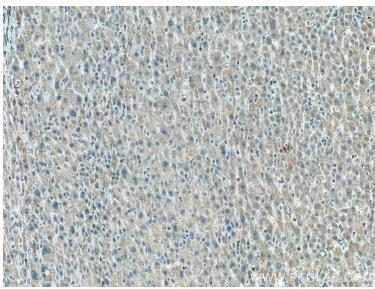
Selected Validation Data



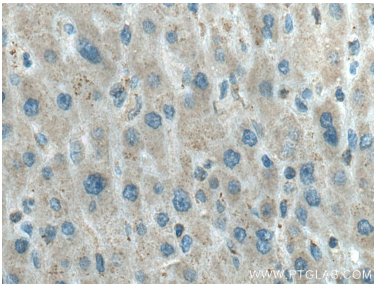
IP result of anti-LPIN1 (IP:27026-1-AP, 4ug; Detection:27026-1-AP 1:500) with LNCaP cells lysate 2400 ug.



Various lysates were subjected to SDS PAGE followed by western blot with 27026-1-AP (LPIN1 antibody) at dilution of 1:5000 incubated at room temperature for 1.5 hours.



Immunohistochemical analysis of paraffin-embedded human liver cancer tissue slide using 27026-1-AP (LPIN1 antibody) at dilution of 1:500 (under 10x lens). Heat mediated antigen retrieval with Tris-EDTA buffer (pH 9.0).



Immunohistochemical analysis of paraffin-embedded human liver cancer tissue slide using 27026-1-AP (LPIN1 antibody) at dilution of 1:500 (under 40x lens). Heat mediated antigen retrieval with Tris-EDTA buffer (pH 9.0).