

For Research Use Only

SHQ1 Polyclonal antibody

Catalog Number: 27020-1-AP

3 Publications



Basic Information

Catalog Number:

27020-1-AP

Size:

400 µg/ml

Source:

Rabbit

Isotype:

IgG

Immunogen Catalog Number:

AG25559

GenBank Accession Number:

BC017274

GeneID (NCBI):

55164

UNIPROT ID:

Q6PI26

Full Name:

SHQ1 homolog (S. cerevisiae)

Calculated MW:

593 aa, 67 kDa

Observed MW:

70 kDa~80 kDa

Purification Method:

Antigen affinity purification

Recommended Dilutions:

WB 1:1000-1:4000

IP 0.5-4.0 µg for 1.0-3.0 mg of total protein lysate

IHC 1:50-1:500

IF/ICC 1:50-1:500

Applications

Tested Applications:

WB, IHC, IF/ICC, IP, ELISA

Cited Applications:

WB, IP, CoIP

Species Specificity:

human

Cited Species:

human, mouse

Note-IHC: suggested antigen retrieval with **TE buffer pH 9.0; (*) Alternatively, antigen retrieval may be performed with citrate buffer pH 6.0**

Positive Controls:

WB : K-562 cells, A549 cells, HEK-293T cells

IP : K-562 cells,

IHC : human colon cancer tissue, human prostate hyperplasia tissue

IF/ICC : A431 cells,

Background Information

Notable Publications

Author	Pubmed ID	Journal	Application
Chien-Hui Chang	39326821	Exp Neurol	WB
Jian Qin	37879098	Hum Mol Genet	WB,IP,CoIP
Florence Schlotter	36869663	Nucleic Acids Res	WB,IP

Storage

Storage:

Store at -20°C. Stable for one year after shipment.

Storage Buffer:

PBS with 0.02% sodium azide and 50% glycerol pH 7.3.

Aliquoting is unnecessary for -20°C storage

For technical support and original validation data for this product please contact:

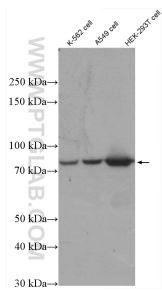
T: 4006900926

E: Proteintech-CN@ptglab.com

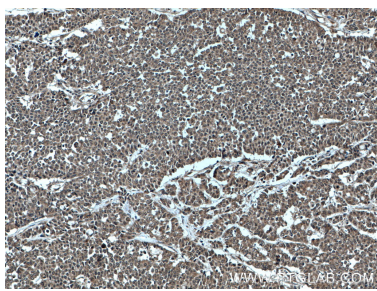
W: ptgcn.com

This product is exclusively available under Proteintech Group brand and is not available to purchase from any other manufacturer.

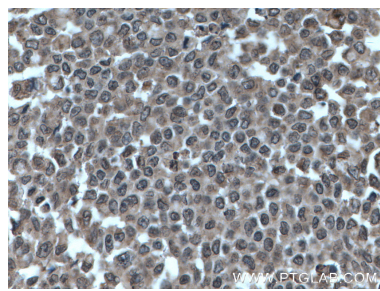
Selected Validation Data



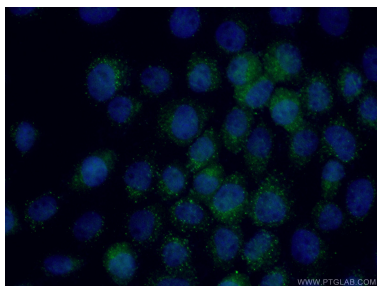
Various lysates were subjected to SDS PAGE followed by western blot with 27020-1-AP (SHQ1 antibody) at dilution of 1:2000 incubated at room temperature for 1.5 hours.



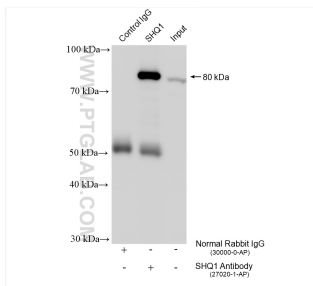
Immunohistochemical analysis of paraffin-embedded human colon cancer tissue slide using 27020-1-AP (SHQ1 antibody) at dilution of 1:200 (under 10x lens. Heat mediated antigen retrieval with Tris-EDTA buffer (pH 9.0).



Immunohistochemical analysis of paraffin-embedded human colon cancer tissue slide using 27020-1-AP (SHQ1 antibody) at dilution of 1:200 (under 40x lens. Heat mediated antigen retrieval with Tris-EDTA buffer (pH 9.0).



Immunofluorescent analysis of (4% PFA) fixed A431 cells using 27020-1-AP (SHQ1 antibody) at dilution of 1:50 and Alexa Fluor 488-Conjugated Goat Anti-Rabbit IgG(H+L).



IP result of anti-SHQ1 (IP:27020-1-AP, 4ug; Detection:27020-1-AP 1:1500) with K-562 cells lysate 2400 ug.