

For Research Use Only

CRELD2 Polyclonal antibody

Catalog Number: 27017-1-AP

1 Publications



Basic Information

Catalog Number:

27017-1-AP

Size:

900 µg/ml

Source:

Rabbit

Isotype:

IgG

Immunogen Catalog Number:

AG25553

GenBank Accession Number:

BC050675

GeneID (NCBI):

79174

UNIPROT ID:

Q6UXH1

Full Name:

cysteine-rich with EGF-like domains 2

Calculated MW:

44 kDa

Observed MW:

30-45 kDa

Purification Method:

Antigen affinity purification

Recommended Dilutions:

WB 1:500-1:2000

IHC 1:50-1:500

Applications

Tested Applications:

IHC, WB, ELISA

Cited Applications:

WB

Species Specificity:

human

Cited Species:

human

Note-IHC: suggested antigen retrieval with TE buffer pH 9.0; (*) Alternatively, antigen retrieval may be performed with citrate buffer pH 6.0

Positive Controls:

WB : human placenta tissue, SH-SY5Y cells, U2OS cells

IHC : human placenta tissue, human pancreas tissue

Background Information

Notable Publications

| Author | Pubmed ID | Journal | Application |
|-----------------------------|-----------|----------|-------------|
| Audrey Kapelanski-Lamoureux | 36242517 | Mol Ther | WB |

Storage

Storage:

Store at -20°C. Stable for one year after shipment.

Storage Buffer:

PBS with 0.02% sodium azide and 50% glycerol pH 7.3.

Aliquoting is unnecessary for -20°C storage

For technical support and original validation data for this product please contact:

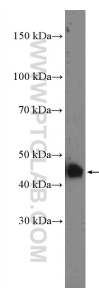
T: 4006900926

E: Proteintech-CN@ptglab.com

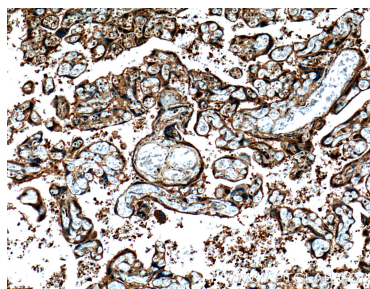
W: ptgcn.com

This product is exclusively available under Proteintech Group brand and is not available to purchase from any other manufacturer.

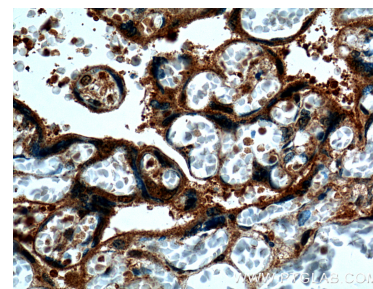
Selected Validation Data



human placenta tissue were subjected to SDS PAGE followed by western blot with 27017-1-AP (CRELD2 Antibody) at dilution of 1:1000 incubated at room temperature for 1.5 hours.



Immunohistochemical analysis of paraffin-embedded human placenta tissue slide using 27017-1-AP (CRELD2 Antibody) at dilution of 1:200 (under 10x lens).



Immunohistochemical analysis of paraffin-embedded human placenta tissue slide using 27017-1-AP (CRELD2 Antibody) at dilution of 1:200 (under 40x lens).