

For Research Use Only

# CITED1 Polyclonal antibody

Catalog Number: 26999-1-AP

2 Publications



## Basic Information

Catalog Number:

26999-1-AP

Size:

1000 ug/ml

Source:

Rabbit

Isotype:

IgG

Immunogen Catalog Number:

AG24643

GenBank Accession Number:

BC004240

GeneID (NCBI):

4435

UNIPROT ID:

Q99966

Full Name:

Cbp/p300-interacting transactivator, with Glu/Asp-rich carboxy-terminal domain, 1

Calculated MW:

27 kDa

Observed MW:

30 kDa

Purification Method:

Antigen affinity purification

Recommended Dilutions:

WB 1:1000-1:4000

IP 0.5-4.0 ug for 1.0-3.0 mg of total protein lysate

IHC 1:500-1:2000

IF/ICC 1:300-1:1200

## Applications

Tested Applications:

WB, IHC, IF/ICC, FC (Intra), IP, ELISA

Cited Applications:

WB

Species Specificity:

human, mouse, rat

Cited Species:

human, rabbit

**Note-IHC: suggested antigen retrieval with TE buffer pH 9.0; (\*) Alternatively, antigen retrieval may be performed with citrate buffer pH 6.0**

Positive Controls:

WB : rat testis tissue, A375 cells, mouse testis tissue

IP : A375 cells,

IHC : human colon cancer tissue, human thyroid cancer tissue, rat testis tissue

IF/ICC : HEK-293 cells,

## Background Information

CITED1, also named as MSG1, belongs to the CITED family. CITED1 is a bifunctional transcriptional cofactor which is able to activate or repress transcription in association with other transcription factors. The CITED1 gene encodes a 27 kDa protein, but a 30 kDa band was also detected in the publication. The elevation of CITED1 may be directly associated with the preneoplastic phenotype (PMID: 23935526, 15272279, 15843474).

## Notable Publications

Author	Pubmed ID	Journal	Application
Jie Yang	38998044	Animals (Basel)	WB
Xin Gu	37616343	Science	WB

## Storage

Storage:

Store at -20°C. Stable for one year after shipment.

Storage Buffer:

PBS with 0.02% sodium azide and 50% glycerol pH 7.3.

Aliquoting is unnecessary for -20°C storage

For technical support and original validation data for this product please contact:

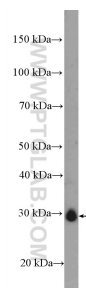
T: 4006900926

E: [Proteintech-CN@ptglab.com](mailto:Proteintech-CN@ptglab.com)

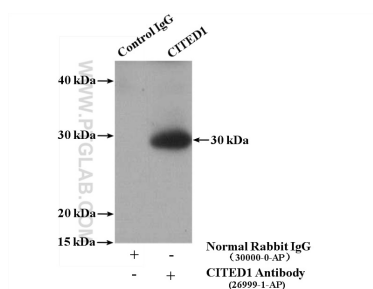
W: [ptgcn.com](http://ptgcn.com)

**This product is exclusively available under Proteintech Group brand and is not available to purchase from any other manufacturer.**

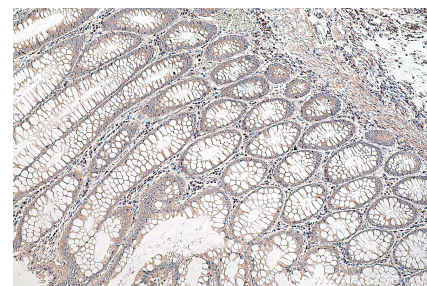
## Selected Validation Data



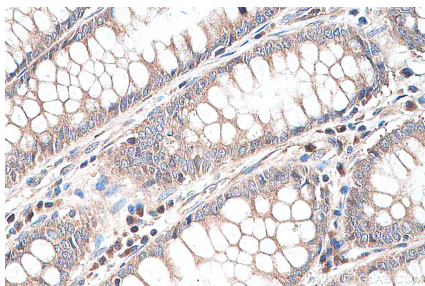
rat testis tissue were subjected to SDS PAGE followed by western blot with 26999-1-AP (CITED1 antibody) at dilution of 1:2000 incubated at room temperature for 1.5 hours.



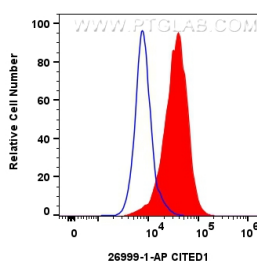
IP result of anti-CITED1 (IP:26999-1-AP, 4ug; Detection:26999-1-AP 1:300) with A375 cells lysate 3000ug.



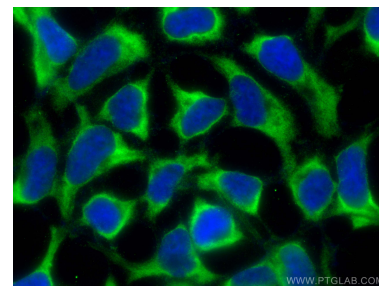
Immunohistochemical analysis of paraffin-embedded human colon cancer tissue slide using 26999-1-AP (CITED1 antibody) at dilution of 1:1000 (under 10x lens). Heat mediated antigen retrieval with Tris-EDTA buffer (pH 9.0).



Immunohistochemical analysis of paraffin-embedded human colon cancer tissue slide using 26999-1-AP (CITED1 antibody) at dilution of 1:1000 (under 40x lens). Heat mediated antigen retrieval with Tris-EDTA buffer (pH 9.0).



1x10<sup>6</sup> HEK-293T cells were intracellularly stained with 0.4 ug CITED1 Polyclonal antibody (26999-1-AP) and CoraLite®488-Conjugated Goat Anti-Rabbit IgG(H+L) (SA00013-2)(red), or 0.4 ug Rabbit IgG control Rabbit PolyAb (30000-0-AP) (blue). Cells were fixed and permeabilized with Transcription Factor Staining Buffer Kit (PF00011).



Immunofluorescent analysis of (-20°C Ethanol) fixed HEK-293 cells using CITED1 antibody (26999-1-AP) at dilution of 1:600 and CoraLite®488-Conjugated AffiniPure Goat Anti-Rabbit IgG(H+L) (SA00013-2).