

For Research Use Only

WFS1 Polyclonal antibody

Catalog Number: 26995-1-AP

Featured Product

20 Publications



Basic Information

Catalog Number:

26995-1-AP

Size:

770 µg/ml

Source:

Rabbit

Isotype:

IgG

Immunogen Catalog Number:

AG25724

GenBank Accession Number:

BC030130

GeneID (NCBI):

7466

UNIPROT ID:

O76024

Full Name:

Wolfram syndrome 1 (wolframin)

Calculated MW:

890 aa, 100 kDa

Purification Method:

Antigen affinity purification

Recommended Dilutions:

IHC 1:500-1:2000

IF-P 1:50-1:500

IF/ICC 1:50-1:500

Applications

Tested Applications:

IHC, IF/ICC, IF-P, ELISA

Cited Applications:

WB, IHC, IF, ColP

Species Specificity:

human, mouse, rat

Cited Species:

human, mouse, rat, zebrafish

Positive Controls:

IHC : rat brain tissue, mouse brain tissue

IF-P : mouse brain tissue,

IF/ICC : HepG2 cells,

Note-IHC: suggested antigen retrieval with *TE buffer pH 9.0*; (*) Alternatively, antigen retrieval may be performed with *citrate buffer pH 6.0*

Background Information

Wolfram syndrome protein (WFS1), also called wolframin, is a transmembrane protein, which is located primarily in the endoplasmic reticulum and its expression is induced in response to ER stress, partially through transcriptional activation. ER localization suggests that WFS1 protein has physiological functions in membrane trafficking, secretion, processing and/or regulation of ER calcium homeostasis. It is ubiquitously expressed with highest levels in brain, pancreas, heart, and insulinoma beta-cell lines. Mutations of the WFS1 gene are responsible for two hereditary diseases, autosomal recessive Wolfram syndrome and autosomal dominant low frequency sensorineural hearing loss.

Notable Publications

| Author | Pubmed ID | Journal | Application |
|-------------------------|-----------|----------------|-------------|
| Jean-Christophe Delpech | 34524859 | Sci Transl Med | IF |
| Linlin Wang | 34848728 | Nat Commun | WB, IF |
| Kun Hu | 34006618 | J Med Genet | WB |

Storage

Storage:

Store at -20°C. Stable for one year after shipment.

Storage Buffer:

PBS with 0.02% sodium azide and 50% glycerol pH 7.3.

Aliquoting is unnecessary for -20°C storage

For technical support and original validation data for this product please contact:

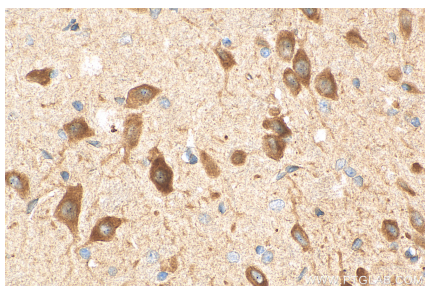
T: 4006900926

E: Proteintech-CN@ptglab.com

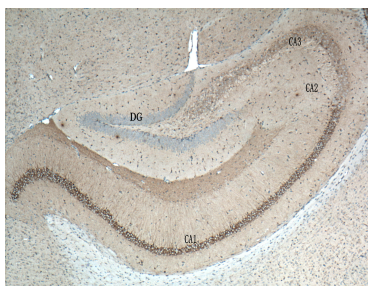
W: ptgcn.com

This product is exclusively available under Proteintech Group brand and is not available to purchase from any other manufacturer.

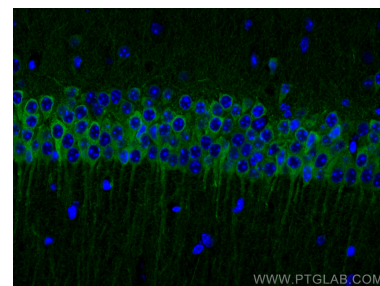
Selected Validation Data



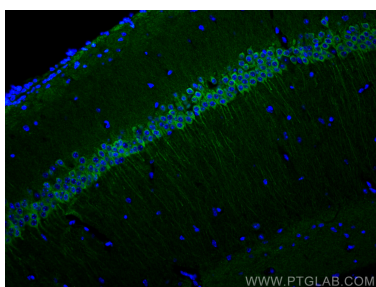
Immunohistochemical analysis of paraffin-embedded rat brain tissue slide using 26995-1-AP (WFS1 antibody) at dilution of 1:1000 (under 40x lens). Heat mediated antigen retrieval with Tris-EDTA buffer (pH 9.0).



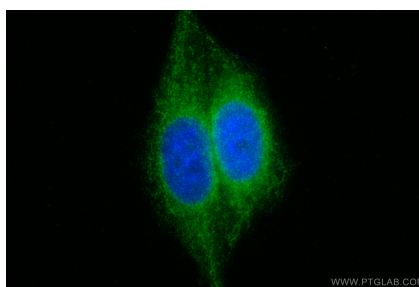
Immunohistochemical analysis of paraffin-embedded mouse brain tissue slide using 26995-1-AP (WFS1 antibody) at dilution of 1:400 (under 4x lens). Heat mediated antigen retrieval with Tris-EDTA buffer (pH 9.0).



Immunofluorescent analysis of (4% PFA) fixed mouse brain tissue using WFS1 antibody (26995-1-AP) at dilution of 1:200 and CoraLite®488-Conjugated AffiniPure Goat Anti-Rabbit IgG(H+L).



Immunofluorescent analysis of (4% PFA) fixed mouse brain tissue using WFS1 antibody (26995-1-AP) at dilution of 1:200 and CoraLite®488-Conjugated AffiniPure Goat Anti-Rabbit IgG(H+L).



Immunofluorescent analysis of (4% PFA) fixed HepG2 cells using WFS1 antibody (26995-1-AP) at dilution of 1:200 and CoraLite®488-Conjugated AffiniPure Goat Anti-Rabbit IgG(H+L).