

For Research Use Only

Collagen Type X Polyclonal antibody, PBS Only

Catalog Number: 26984-1-PBS



Basic Information

Catalog Number:

26984-1-PBS

Source:

Rabbit

Isotype:

IgG

Immunogen Catalog Number:

AG25741

GenBank Accession Number:

BC130621

GeneID (NCBI):

1300

UNIPROT ID:

Q03692

Full Name:

collagen, type X, alpha 1

Calculated MW:

680 aa, 66 kDa

Observed MW:

60-66 kDa

Purification Method:

Antigen affinity purification

Applications

Tested Applications:

WB, IF/ICC, Indirect ELISA

Species Specificity:

human, mouse, rat

Background Information

Collagen type X alpha 1 (COL10A1), a secreted, short-chain collagen, belongs to the collagen family, which is a major interstitial matrix component specifically expressed by hypertrophic chondrocytes. COL10A1 expression is elevated in many solid tumor types, such as colon cancer, esophagus cancer, and breast cancer, and displays vital roles in many critical cellular processes (PMID: 30154451, 25321476).

Storage

Storage:

Store at -80°C.

The product is shipped with ice packs. Upon receipt, store it immediately at -80°C

Storage Buffer:

PBS only, pH7.3

For technical support and original validation data for this product please contact:

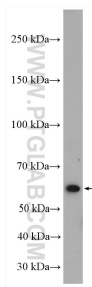
T: 4006900926

E: Proteintech-CN@ptglab.com

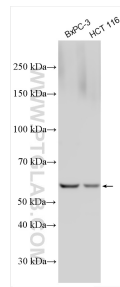
W: ptgcn.com

This product is exclusively available under Proteintech Group brand and is not available to purchase from any other manufacturer.

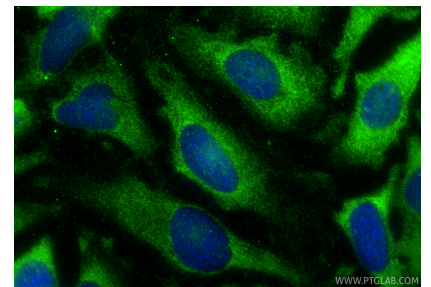
Selected Validation Data



ROS1728 cells were subjected to SDS PAGE followed by western blot with 26984-1-AP (COL10A1 antibody) at dilution of 1:600 incubated at room temperature for 1.5 hours. This data was developed using the same antibody clone with 26984-1-PBS in a different storage buffer formulation.



Various lysates were subjected to SDS PAGE followed by western blot with 26984-1-AP (COL10A1 antibody) at dilution of 1:500 incubated at room temperature for 1.5 hours. This data was developed using the same antibody clone with 26984-1-PBS in a different storage buffer formulation.



Immunofluorescent analysis of (-20°C Methanol) fixed HeLa cells using Collagen Type X antibody (26984-1-AP) at dilution of 1:400 and CoraLite®488-Conjugated Goat Anti-Rabbit IgG(H+L) (SA00013-2). This data was developed using the same antibody clone with 26984-1-PBS in a different storage buffer formulation.