

For Research Use Only

Collagen Type X Polyclonal antibody

Catalog Number: 26984-1-AP

1 Publications



Basic Information

Catalog Number:

26984-1-AP

Concentration:

1000 ug/ml

Source:

Rabbit

Isotype:

IgG

Immunogen Catalog Number:

AG25741

GenBank Accession Number:

BC130621

GeneID (NCBI):

1300

UNIPROT ID:

Q03692

Full Name:

collagen, type X, alpha 1

Calculated MW:

680 aa, 66 kDa

Observed MW:

60-66 kDa

Purification Method:

Antigen affinity purification

Recommended Dilutions:

WB 1:500-1:1000

IHC 1:50-1:500

Applications

Tested Applications:

WB, IHC, ELISA

Cited Applications:

WB

Species Specificity:

human, mouse, rat

Cited Species:

human

Note-IHC: suggested antigen retrieval with TE buffer pH 9.0; (*) Alternatively, antigen retrieval may be performed with citrate buffer pH 6.0

Positive Controls:

WB : BxPC-3 cells, ROS1728 cells, HCT 116 cells

IHC : mouse liver tissue,

Background Information

Collagen type X alpha 1 (COL10A1), a secreted, short-chain collagen, belongs to the collagen family, which is a major interstitial matrix component specifically expressed by hypertrophic chondrocytes. COL10A1 expression is elevated in many solid tumor types, such as colon cancer, esophagus cancer, and breast cancer, and displays vital roles in many critical cellular processes (PMID: 30154451, 25321476).

Notable Publications

| Author | Pubmed ID | Journal | Application |
|------------|-----------|-------------------|-------------|
| Longfei Li | 38528538 | J Orthop Surg Res | WB |

Storage

Storage:

Store at -20°C. Stable for one year after shipment.

Storage Buffer:

PBS with 0.02% sodium azide and 50% glycerol

Aliquoting is unnecessary for -20°C storage

For technical support and original validation data for this product please contact:

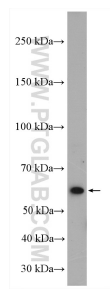
T: 4006900926

E: Proteintech-CN@ptglab.com

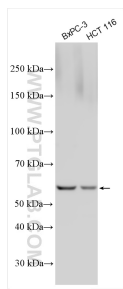
W: ptgcn.com

This product is exclusively available under Proteintech Group brand and is not available to purchase from any other manufacturer.

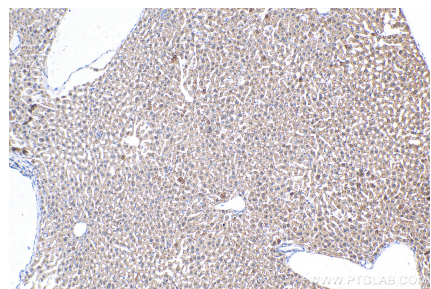
Selected Validation Data



ROS1728 cells were subjected to SDS PAGE followed by western blot with 26984-1-AP (COL10A1 antibody) at dilution of 1:600 incubated at room temperature for 1.5 hours.



Various lysates were subjected to SDS PAGE followed by western blot with 26984-1-AP (COL10A1 antibody) at dilution of 1:500 incubated at room temperature for 1.5 hours.



Immunohistochemical analysis of paraffin-embedded mouse liver tissue slide using 26984-1-AP (COL10A1 antibody) at dilution of 1:200 (under 10x lens). Heat mediated antigen retrieval with Tris-EDTA buffer (pH 9.0).