

For Research Use Only

# RIT1 Polyclonal antibody

Catalog Number: 26977-1-AP



## Basic Information

Catalog Number:

26977-1-AP

Concentration:

900 ug/ml

Source:

Rabbit

Isotype:

IgG

Immunogen Catalog Number:

AG25636

GenBank Accession Number:

BC104186

GeneID (NCBI):

6016

UNIPROT ID:

Q92963

Full Name:

Ras-like without CAAX 1

Calculated MW:

25 kDa

Observed MW:

25-28 kDa

Purification Method:

Antigen affinity purification

Recommended Dilutions:

WB 1:1000-1:4000

IF/ICC 1:50-1:500

## Applications

Tested Applications:

WB, IF/ICC, ELISA

Species Specificity:

human

Positive Controls:

WB : A549 cells, HeLa cells, human placenta tissue

IF/ICC : MCF-7 cells,

## Background Information

RIT1 (Ras-like without CAAX protein 1) is also named as RIBB, ROC1 and GTP-binding protein Rit1. RIT1 serves as a regulatory factor for neuronal cell proliferation, survival, and differentiation (PMID: 28007959). Rit1 mediates oxidative stress resistance, contributing to cell survival via the p38 MAPK signaling pathway (PMID: 21737674). As a small G protein of Ras family, RIT1 plays a critical role in various tumors (such as hepatocellular carcinoma, HCC) (PMID: 38017479). It is worth noting that RIT1 is frequently amplified in various human cancers including HCC, lung adenocarcinoma, cholangiocarcinoma, uterine carcinosarcoma, breast cancer, and ovarian cancer (PMID: 38017479).

## Storage

Storage:

Store at -20°C. Stable for one year after shipment.

Storage Buffer:

PBS with 0.02% sodium azide and 50% glycerol, pH7.3

Aliquoting is unnecessary for -20°C storage

For technical support and original validation data for this product please contact:

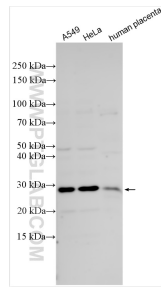
T: 4006900926

E: [Proteintech-CN@ptglab.com](mailto:Proteintech-CN@ptglab.com)

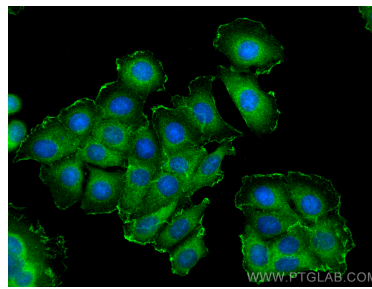
W: [ptgcn.com](http://ptgcn.com)

This product is exclusively available under Proteintech Group brand and is not available to purchase from any other manufacturer.

## Selected Validation Data



Various lysates were subjected to SDS PAGE followed by western blot with 26977-1-AP (RIT1 antibody) at dilution of 1:2000 incubated at room temperature for 1.5 hours.



Immunofluorescent analysis of (-20°C Methanol) fixed MCF-7 cells using RIT1 antibody (26977-1-AP) at dilution of 1:200 and CoraLite® 488-Conjugated Goat Anti-Rabbit IgG(H+L) (SA00013-2).