

For Research Use Only

ELMO1 Polyclonal antibody, PBS Only

Catalog Number: 26974-1-PBS



Basic Information

Catalog Number:

26974-1-PBS

Source:

Rabbit

Isotype:

IgG

Immunogen Catalog Number:

AG25635

GenBank Accession Number:

BC114341

GeneID (NCBI):

9844

UNIPROT ID:

Q92556

Full Name:

engulfment and cell motility 1

Observed MW:

80-84 kDa

Purification Method:

Antigen affinity purification

Applications

Tested Applications:

WB, IHC, IF/ICC, Indirect ELISA

Species Specificity:

human, mouse, rat

Background Information

ELMO1 (Engulfment and cell motility protein 1) is a cytoplasmic adapter protein that physically associates with members of the Dock-A family of Rac-GEFs, of which Dock1 and Dock2 are the best characterized (PMID: 24821968). ELMO1 is expressed in platelets and negatively regulates integrin-mediated platelet spreading. Upregulated ELMO1 expression is associated with a poor prognosis in hepatocellular carcinoma (HCC), as well as increased cell growth, invasion, migration, angiogenesis and EMT in vitro and in vivo (PMID: 31324602).

Storage

Storage:

Store at -80°C.

The product is shipped with ice packs. Upon receipt, store it immediately at -80°C

Storage Buffer:

PBS only, pH7.3

For technical support and original validation data for this product please contact:

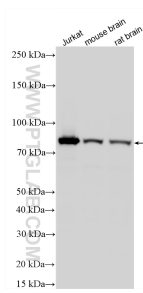
T: 4006900926

E: Proteintech-CN@ptglab.com

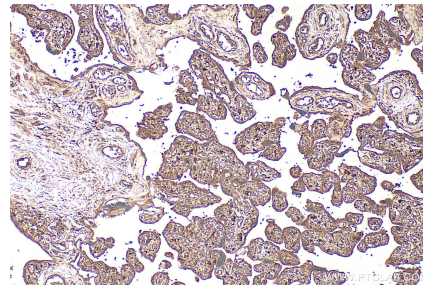
W: ptgcn.com

This product is exclusively available under Proteintech Group brand and is not available to purchase from any other manufacturer.

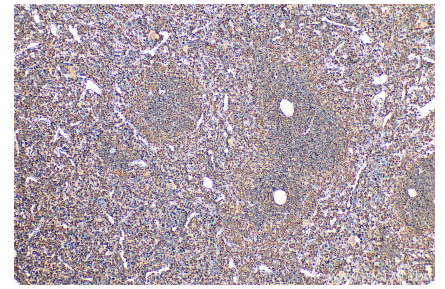
Selected Validation Data



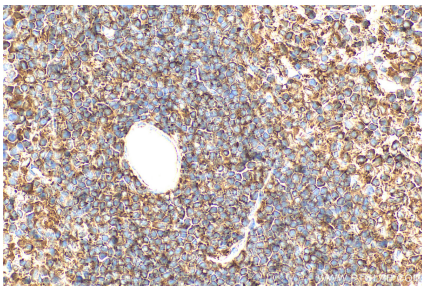
Various lysates were subjected to SDS PAGE followed by western blot with 26974-1-AP (ELMO 1 antibody) at dilution of 1:3000 incubated at room temperature for 1.5 hours. This data was developed using the same antibody clone with 26974-1-PBS in a different storage buffer formulation.



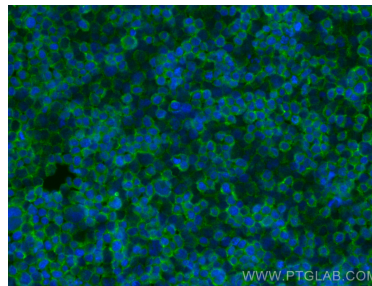
Immunohistochemical analysis of paraffin-embedded human placenta tissue slide using 26974-1-AP (ELMO 1 antibody) at dilution of 1:200 (under 10x lens). Heat mediated antigen retrieval with Tris-EDTA buffer (pH 9.0). This data was developed using the same antibody clone with 26974-1-PBS in a different storage buffer formulation.



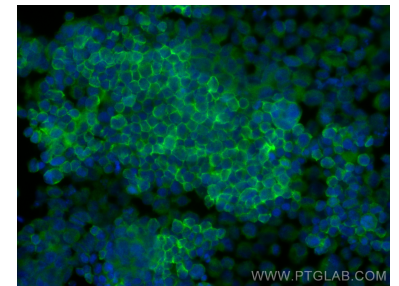
Immunohistochemical analysis of paraffin-embedded mouse spleen tissue slide using 26974-1-AP (ELMO 1 antibody) at dilution of 1:200 (under 10x lens). Heat mediated antigen retrieval with Tris-EDTA buffer (pH 9.0). This data was developed using the same antibody clone with 26974-1-PBS in a different storage buffer formulation.



Immunohistochemical analysis of paraffin-embedded mouse spleen tissue slide using 26974-1-AP (ELMO 1 antibody) at dilution of 1:200 (under 40x lens). Heat mediated antigen retrieval with Tris-EDTA buffer (pH 9.0). This data was developed using the same antibody clone with 26974-1-PBS in a different storage buffer formulation.



Immunofluorescent analysis of (4% PFA) fixed Jurkat cells using ELMO 1 antibody (26974-1-AP) at dilution of 1:200 and CoraLite®488-Conjugated Goat Anti-Rabbit IgG(H+L) (SA00013-2). This data was developed using the same antibody clone with 26974-1-PBS in a different storage buffer formulation.



Immunofluorescent analysis of (4% PFA) fixed K-562 cells using ELMO 1 antibody (26974-1-AP) at dilution of 1:200 and CoraLite®488-Conjugated Goat Anti-Rabbit IgG(H+L) (SA00013-2). This data was developed using the same antibody clone with 26974-1-PBS in a different storage buffer formulation.