

ELMO1 Polyclonal antibody

Catalog Number: 26974-1-AP

Basic Information

Catalog Number: 26974-1-AP	GenBank Accession Number: BC114341	Purification Method: Antigen affinity purification
Concentration: 350 ug/ml	GeneID (NCBI): 9844	Recommended Dilutions: WB 1:1000-1:6000
Source: Rabbit	UNIPROT ID: Q92556	IHC 1:50-1:500 IF/ICC 1:50-1:500
Isotype: IgG	Full Name: engulfment and cell motility 1	
Immunogen Catalog Number: AG25635	Observed MW: 80-84 kDa	

Applications

Tested Applications: WB, IHC, IF/ICC, ELISA	Positive Controls:
Species Specificity: human, mouse, rat	WB : Jurkat cells, mouse brain tissue, rat brain tissue
Note-IHC: suggested antigen retrieval with TE buffer pH 9.0; (*) Alternatively, antigen retrieval may be performed with citrate buffer pH 6.0	IHC : mouse spleen tissue, human placenta tissue
	IF/ICC : K-562 cells, Jurkat cells

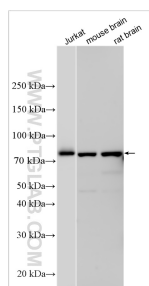
Background Information

ELMO1 (Engulfment and cell motility protein 1) is a cytoplasmic adapter protein that physically associates with members of the Dock-A family of Rac-GEFs, of which Dock1 and Dock2 are the best characterized (PMID: 24821968). ELMO1 is expressed in platelets and negatively regulates integrin-mediated platelet spreading. Upregulated ELMO1 expression is associated with a poor prognosis in hepatocellular carcinoma (HCC), as well as increased cell growth, invasion, migration, angiogenesis and EMT in vitro and in vivo (PMID: 31324602).

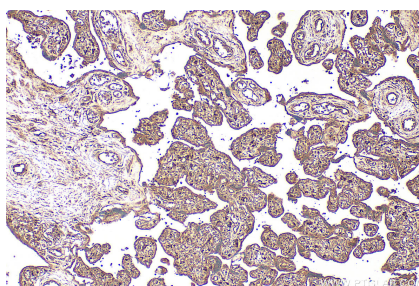
Storage

Storage:
Store at -20°C. Stable for one year after shipment.
Storage Buffer:
PBS with 0.02% sodium azide and 50% glycerol, pH7.3
Aliquoting is unnecessary for -20°C storage

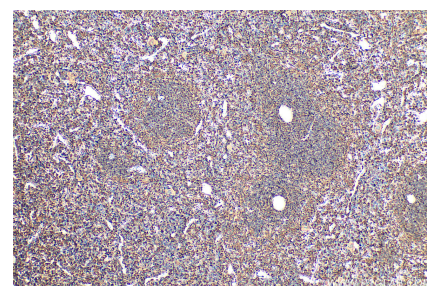
Selected Validation Data



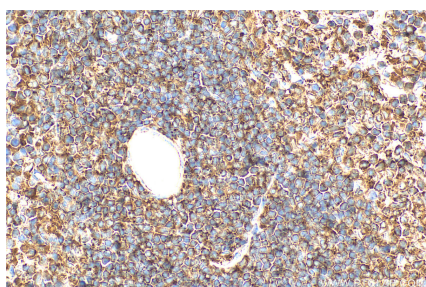
Various lysates were subjected to SDS PAGE followed by western blot with 26974-1-AP (ELMO1 antibody) at dilution of 1:3000 incubated at room temperature for 1.5 hours.



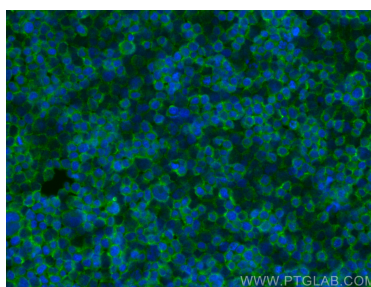
Immunohistochemical analysis of paraffin-embedded human placenta tissue slide using 26974-1-AP (ELMO1 antibody) at dilution of 1:200 (under 10x lens). Heat mediated antigen retrieval with Tris-EDTA buffer (pH 9.0).



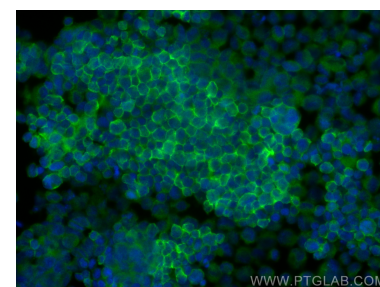
Immunohistochemical analysis of paraffin-embedded mouse spleen tissue slide using 26974-1-AP (ELMO1 antibody) at dilution of 1:200 (under 10x lens). Heat mediated antigen retrieval with Tris-EDTA buffer (pH 9.0).



Immunohistochemical analysis of paraffin-embedded mouse spleen tissue slide using 26974-1-AP (ELMO1 antibody) at dilution of 1:200 (under 40x lens). Heat mediated antigen retrieval with Tris-EDTA buffer (pH 9.0).



Immunofluorescent analysis of (4% PFA) fixed Jurkat cells using ELMO1 antibody (26974-1-AP) at dilution of 1:200 and CoraLite®488-Conjugated Goat Anti-Rabbit IgG(H+L) (SA00013-2).



Immunofluorescent analysis of (4% PFA) fixed K-562 cells using ELMO1 antibody (26974-1-AP) at dilution of 1:200 and CoraLite®488-Conjugated Goat Anti-Rabbit IgG(H+L) (SA00013-2).