

For Research Use Only

# RYR1 Polyclonal antibody

Catalog Number: 26968-1-AP

2 Publications



## Basic Information

Catalog Number:

26968-1-AP

Size:

850 µg/ml

Source:

Rabbit

Isotype:

IgG

Immunogen Catalog Number:

AG25120

GenBank Accession Number:

NM\_000540

GeneID (NCBI):

6261

UNIPROT ID:

P21817

Full Name:

ryanodine receptor 1 (skeletal)

Calculated MW:

565 kDa

Purification Method:

Antigen affinity purification

Recommended Dilutions:

IHC 1:50-1:500

IF-P 1:50-1:500

## Applications

Tested Applications:

IHC, IF-P, ELISA

Cited Applications:

WB, IF

Species Specificity:

human, mouse

Cited Species:

mouse, chicken

**Note-IHC: suggested antigen retrieval with TE buffer pH 9.0; (\*) Alternatively, antigen retrieval may be performed with citrate buffer pH 6.0**

Positive Controls:

IHC : mouse brain tissue, human cerebellum tissue, human skeletal muscle tissue

IF-P : mouse cerebellum tissue, mouse brain tissue

## Background Information

Ryanodine receptor isoform-1 (RyR1) is a major calcium channel in skeletal muscle important for excitation-contraction coupling. The transmembrane region of RyR1 is comprised of two domains including the pseudo voltage sensor domain and the pore-forming domain (PMID: 27855725). Dominant RyR1 mutations are the leading cause of MH. Studies on the Ca<sup>2+</sup> conducting properties of RyR1 channels containing Malignant hyperthermia mutations expressed in myotubes.

## Notable Publications

Author	Pubmed ID	Journal	Application
Yingsen Liu	39369492	Poult Sci	WB
Benedict Abdon	37535424	JCI Insight	IF

## Storage

Storage:

Store at -20°C. Stable for one year after shipment.

Storage Buffer:

PBS with 0.02% sodium azide and 50% glycerol pH 7.3.

Aliquoting is unnecessary for -20°C storage

For technical support and original validation data for this product please contact:

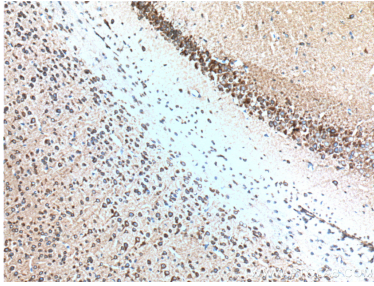
T: 4006900926

E: [Proteintech-CN@ptglab.com](mailto:Proteintech-CN@ptglab.com)

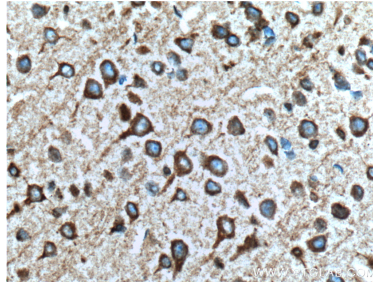
W: [ptgcn.com](http://ptgcn.com)

This product is exclusively available under Proteintech Group brand and is not available to purchase from any other manufacturer.

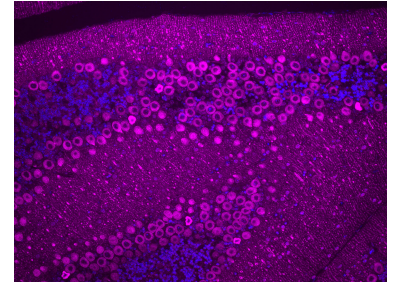
## Selected Validation Data



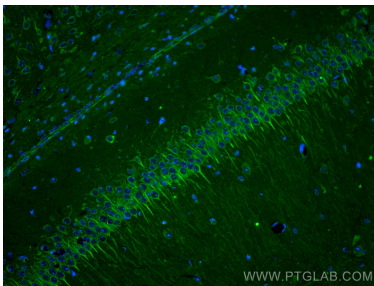
Immunohistochemical analysis of paraffin-embedded mouse brain tissue slide using 26968-1-AP (RyR1 Antibody) at dilution of 1:200 (under 10x lens). Heat mediated antigen retrieval with Tris-EDTA buffer (pH 9.0).



Immunohistochemical analysis of paraffin-embedded mouse brain tissue slide using 26968-1-AP (RyR1 Antibody) at dilution of 1:200 (under 40x lens). Heat mediated antigen retrieval with Tris-EDTA buffer (pH 9.0).



Immunofluorescent analysis of (4% PFA) fixed mouse cerebellum tissue using RyR1 antibody (26968-1-AP) at dilution of 1:200 and CoraLite®647-conjugated F(ab.



Immunofluorescent analysis of (4% PFA) fixed mouse brain tissue using RyR1 antibody (26968-1-AP) at dilution of 1:200 and CoraLite®488-Conjugated Goat Anti-Rabbit IgG(H+L).