

For Research Use Only

PKC eta Polyclonal antibody

Catalog Number: 26916-1-AP



Basic Information

Catalog Number: 26916-1-AP	GenBank Accession Number: BC037268	Purification Method: Antigen affinity purification
Source: Rabbit	GeneID (NCBI): 5583	Recommended Dilutions: WB: 1:1000-1:4000
Isotype: IgG	UNIPROT ID: P24723	
Immunogen Catalog Number: AG25365	Full Name: protein kinase C, eta	
	Observed MW: 75-90 kDa	

Applications

Tested Applications: WB, ELISA	Positive Controls: WB : PC-3 cells, Jurkat cells
Species Specificity: human	

Background Information

PRKCH (gene ID: 5583) encodes protein kinase C eta (PKC η), a calcium independent, phospholipid dependent serine/threonine kinase of the novel PKC subfamily. It regulates cell proliferation, differentiation, and apoptosis, with prominent roles in keratinocyte differentiation, early B cell development, and epithelial barrier integrity. Genetic variants in PRKCH are linked to cerebral infarction and Alzheimer's disease, while PKC η exhibits context dependent functions in cancer-promoting progression and chemoresistance in some tumors (e.g., glioblastoma) but acting as a tumor suppressor in others (e.g., hepatocellular carcinoma).

Storage

Storage:
Store at -20°C. Stable for one year after shipment.
Storage Buffer:
PBS with 0.02% sodium azide and 50% glycerol, pH7.3
Aliquoting is unnecessary for -20°C storage

For technical support and original validation data for this product please contact:

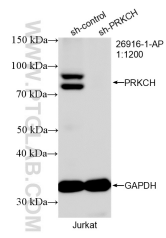
T: 4006900926

E: Proteintech-CN@ptglab.com

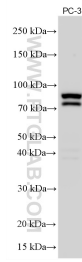
W: ptgcn.com

This product is exclusively available under Proteintech Group brand and is not available to purchase from any other manufacturer.

Selected Validation Data



WB result of PKC eta antibody (26916-1-AP; 1:1200; incubated at room temperature for 1.5 hours) with sh-Control and sh-PKC eta transfected Jurkat cells.



PC-3 cells were subjected to SDS PAGE followed by western blot with 26916-1-AP (PKC eta antibody) at dilution of 1:2000 incubated at room temperature for 1.5 hours.