

For Research Use Only

Claudin 2 Polyclonal antibody

Catalog Number: 26912-1-AP

13 Publications



Basic Information

Catalog Number:

26912-1-AP

Concentration:

450 ug/ml

Source:

Rabbit

Isotype:

IgG

Immunogen Catalog Number:

AG25527

GenBank Accession Number:

BC014424

GeneID (NCBI):

9075

UNIPROT ID:

P57739

Full Name:

claudin 2

Calculated MW:

25 kDa

Observed MW:

25 kDa

Purification Method:

Antigen affinity purification

Recommended Dilutions:

WB 1:500-1:2000

Applications

Tested Applications:

WB, ELISA

Cited Applications:

WB, IF

Species Specificity:

human

Cited Species:

human, mouse, rat

Positive Controls:

WB : A549 cells, HEK-293 cells, Caco-2 cells, HT-29 cells, HepG2 cells, PANC-1 cells

Background Information

Claudin 2, also named as SP82, belongs to the claudin family. Claudin 2 is a tetraspan membrane protein consisting of two extracellular domains (ECL1 and ECL2), a small intracellular loop connecting the second and third transmembrane sections and short intracellular N and C terminal portions. Claudin 2 is a cation-selective channel forming TJ protein expressed in leaky epithelia. Claudin 2 is a 230 amino acid transmembrane protein, with a calculated molecular mass of 25 kDa (PMID: 31726679)

Notable Publications

Author	Pubmed ID	Journal	Application
Yannan Zhang	39861171	Pharmaceuticals (Basel)	WB
Yannan Zhang	39599640	Nutrients	WB
Jian Wu	39490563	Pharmacol Res	WB

Storage

Storage:

Store at -20°C. Stable for one year after shipment.

Storage Buffer:

PBS with 0.02% sodium azide and 50% glycerol, pH7.3

Aliquoting is unnecessary for -20°C storage

For technical support and original validation data for this product please contact:

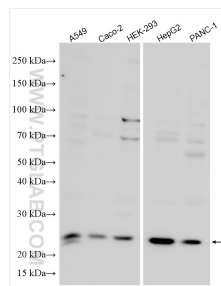
T: 4006900926

E: Proteintech-CN@ptglab.com

W: ptgcn.com

This product is exclusively available under Proteintech Group brand and is not available to purchase from any other manufacturer.

Selected Validation Data



Various lysates were subjected to SDS PAGE followed by western blot with 26912-1-AP (Claudin 2 antibody) at dilution of 1:1000 incubated at room temperature for 1.5 hours.