

SLC35A3 Polyclonal antibody

Catalog Number: 26874-1-AP

1 Publications

Basic Information

Catalog Number:

26874-1-AP

Size:

260 µg/ml

Source:

Rabbit

Isotype:

IgG

Immunogen Catalog Number:

AG25468

GenBank Accession Number:

BC005136

GeneID (NCBI):

23443

UNIPROT ID:

Q9Y2D2

Full Name:

solute carrier family 35 (UDP-N-acetylglucosamine (UDP-GlcNAc) transporter), member A3

Calculated MW:

325 aa, 36 kDa

Observed MW:

32-36 and 41 kDa

Purification Method:

Antigen affinity purification

Recommended Dilutions:

WB 1:500-1:2000

Applications

Tested Applications:

WB, ELISA

Cited Applications:

WB

Species Specificity:

human

Cited Species:

human

Positive Controls:

WB : HeLa cells, HEK-293 cells, HepG2 cells, LNCaP cells

Background Information

SLC35A3, also named as UDP-N-acetylglucosamine transporter(NGT), is located to the Golgi apparatus. SLC35A3 can form heterologous complexes with SLC35A2(UGT) and Mgats in the Golgi membrane which may promote biosynthesis of complex N-glycans. It has been reported that the mutation of SLC35A3 is associated with skeletal dysplasia and epilepsies which could result from impaired glycosylation of proteins. SLC35A3 has some isoforms with 32-36 kDa and 41 kDa.(PMID: 25944901, 28777481 , 16344554, 23583405)

Notable Publications

Author	Pubmed ID	Journal	Application
Shuai Lu	38172565	Sci Rep	WB

Storage

Storage:

Store at -20°C. Stable for one year after shipment.

Storage Buffer:

PBS with 0.02% sodium azide and 50% glycerol pH 7.3.

Aliquoting is unnecessary for -20°C storage

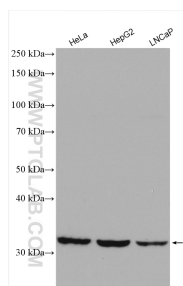
For technical support and original validation data for this product please contact:

T: 4006900926

E: Proteintech-CN@ptglab.comW: ptgcn.com

This product is exclusively available under Proteintech Group brand and is not available to purchase from any other manufacturer.

Selected Validation Data



Various lysates were subjected to SDS PAGE followed by western blot with 26874-1-AP (SLC35A3 antibody) at dilution of 1:1000 incubated at room temperature for 1.5 hours.