

For Research Use Only

MATE 2 Polyclonal antibody

Catalog Number: 26873-1-AP



Basic Information

Catalog Number:

26873-1-AP

Size:

650 µg/ml

Source:

Rabbit

Isotype:

IgG

Immunogen Catalog Number:

AG25472

GenBank Accession Number:

BC035288

GeneID (NCBI):

146802

UNIPROT ID:

Q86VL8

Full Name:

solute carrier family 47, member 2

Calculated MW:

602 aa, 65 kDa

Observed MW:

65-70 kDa

Purification Method:

Antigen affinity purification

Recommended Dilutions:

WB 1:500-1:1000

Applications

Tested Applications:

WB, ELISA

Species Specificity:

human, Canine

Positive Controls:

WB : MDCK cells,

Background Information

Storage

Storage:

Store at -20°C. Stable for one year after shipment.

Storage Buffer:

PBS with 0.02% sodium azide and 50% glycerol pH 7.3.

Aliquoting is unnecessary for -20°C storage

For technical support and original validation data for this product please contact:

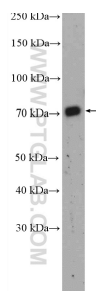
T: 4006900926

E: Proteintech-CN@ptglab.com

W: ptgcn.com

This product is exclusively available under Proteintech Group brand and is not available to purchase from any other manufacturer.

Selected Validation Data



MDCK cells were subjected to SDS PAGE followed by western blot with 26873-1-AP (MATE 2 antibody) at dilution of 1:600 incubated at room temperature for 1.5 hours.