

For Research Use Only

# TIAM2 Polyclonal antibody

Catalog Number: 26870-1-AP



## Basic Information

<b>Catalog Number:</b> 26870-1-AP	<b>GenBank Accession Number:</b> BC137275	<b>Purification Method:</b> Antigen affinity purification
<b>Size:</b> 350 µg/ml	<b>GeneID (NCBI):</b> 26230	<b>Recommended Dilutions:</b> WB 1:500-1:2000
<b>Source:</b> Rabbit	<b>UNIPROT ID:</b> Q8IVF5	
<b>Isotype:</b> IgG	<b>Full Name:</b> T-cell lymphoma invasion and metastasis 2	
<b>Immunogen Catalog Number:</b> AG25469	<b>Observed MW:</b> 190-200 kDa	

## Applications

<b>Tested Applications:</b> FC, WB, ELISA	<b>Positive Controls:</b> WB : BxPC-3 cells, U2OS cells, mouse testis tissue, rat testis tissue
<b>Species Specificity:</b> human, mouse, rat	

## Background Information

TIAM2 is a Rac1-specific GEF, which was identified originally as a homologue of TIAM1. TIAM2 plays a critical role in the malignancy development of many human cancers. TIAM2 expression upregulates N-cadherin and vimentin, thus enhancing epithelial-to-mesenchymal transition (EMT) and leading to the enhancement of proliferation and invasion in hepatoma cells.

## Storage

**Storage:**  
Store at -20°C. Stable for one year after shipment.  
**Storage Buffer:**  
PBS with 0.02% sodium azide and 50% glycerol pH 7.3.  
Aliquoting is unnecessary for -20°C storage

For technical support and original validation data for this product please contact:

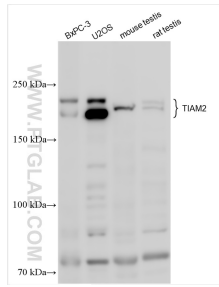
T: 4006900926

E: [Proteintech-CN@ptglab.com](mailto:Proteintech-CN@ptglab.com)

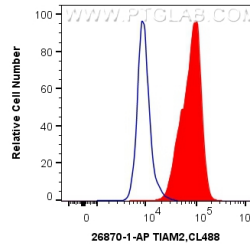
W: [ptgcn.com](http://ptgcn.com)

This product is exclusively available under Proteintech Group brand and is not available to purchase from any other manufacturer.

## Selected Validation Data



Various lysates were subjected to SDS PAGE followed by western blot with 26870-1-AP (TIAM2 antibody) at dilution of 1:1000 incubated at room temperature for 1.5 hours.



$1 \times 10^6$  K-562 cells were intracellularly stained with 0.4 ug Anti-Human TIAM2 (26870-1-AP) and CoraLite®488-Conjugated AffiniPure Goat Anti-Rabbit IgG(H+L) at dilution 1:1000 (red), or 0.4 ug Rabbit IgG control Rabbit PolyAb (30000-0-AP, Clone: ) (blue). Cells were fixed with 4% PFA and permeabilized with Flow Cytometry Perm Buffer (PF00011-C).