

For Research Use Only

# LTBP1 Polyclonal antibody

Catalog Number: 26855-1-AP

Featured Product

6 Publications



## Basic Information

Catalog Number:

26855-1-AP

Concentration:

500 µg/ml

Source:

Rabbit

Isotype:

IgG

Immunogen Catalog Number:

AG25392

GenBank Accession Number:

BC130289

GeneID (NCBI):

4052

UNIPROT ID:

Q14766

Full Name:

latent transforming growth factor beta binding protein 1

Calculated MW:

1721 aa, 187 kDa

Observed MW:

150 kDa

Purification Method:

Antigen affinity purification

Recommended Dilutions:

WB 1:500-1:3000

IHC 1:50-1:500

IF/ICC 1:50-1:500

## Applications

Tested Applications:

WB, IHC, IF/ICC, ELISA

Cited Applications:

WB, IHC, IF

Species Specificity:

human

Cited Species:

human, mouse

**Note-IHC: suggested antigen retrieval with TE buffer pH 9.0; (\*) Alternatively, antigen retrieval may be performed with citrate buffer pH 6.0**

Positive Controls:

WB : human plasma tissue,

IHC : human breast cancer tissue,

IF/ICC : HeLa cells,

## Background Information

Latent TGF β binding protein 1 (LTBP1) is a large extracellular protein which belongs to the family of latent TGF-beta binding proteins (LTBPs). LTBP1 is essential for TGF-beta folding, secretion, matrix localization and activation. LTBP1 has also been demonstrated to interact with a number of insoluble extracellular matrix components, such as fibrillin. We got 150-240 kDa in western blotting due to protein glycosylation of LTBP1 (PMID: 18086923, PMID: 9923648 ).

## Notable Publications

Author	Pubmed ID	Journal	Application
Mingqing Cui	34608122	Cell Death Discov	WB
Rui Cai	32216815	J Transl Med	WB,IHC
Ruizhi Zhang	39712012	Front Immunol	WB

## Storage

Storage:

Store at -20°C. Stable for one year after shipment.

Storage Buffer:

PBS with 0.02% sodium azide and 50% glycerol pH 7.3.

Aliquoting is unnecessary for -20°C storage

For technical support and original validation data for this product please contact:

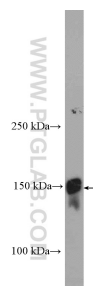
T: 4006900926

E: Proteintech-CN@ptglab.com

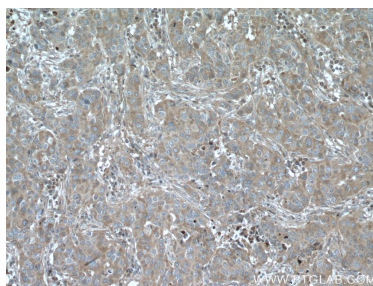
W: ptgcn.com

**This product is exclusively available under Proteintech Group brand and is not available to purchase from any other manufacturer.**

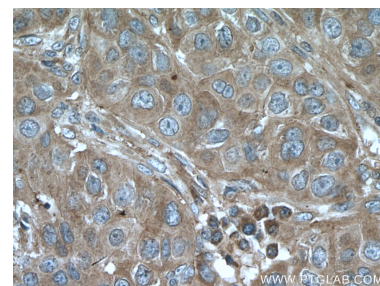
## Selected Validation Data



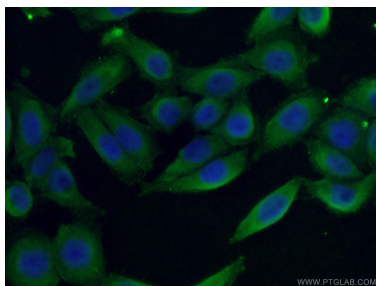
human plasma were subjected to SDS PAGE followed by western blot with 26855-1-AP (LTBP1 Antibody) at dilution of 1:1500 incubated at room temperature for 1.5 hours.



Immunohistochemical analysis of paraffin-embedded human breast cancer tissue slide using 26855-1-AP (LTBP1 antibody) at dilution of 1:200 (under 10x lens. Heat mediated antigen retrieval with Tris-EDTA buffer (pH 9.0).



Immunohistochemical analysis of paraffin-embedded human breast cancer tissue slide using 26855-1-AP (LTBP1 antibody) at dilution of 1:200 (under 40x lens. Heat mediated antigen retrieval with Tris-EDTA buffer (pH 9.0).



Immunofluorescent analysis of (4% PFA) fixed HeLa cells using 26855-1-AP (LTBP1 antibody) at dilution of 1:50 and Alexa Fluor 488-Conjugated Goat Anti-Rabbit IgG(H+L).