

For Research Use Only

CRH/CRF Polyclonal antibody

Catalog Number: 26848-1-AP **2 Publications**



Basic Information

Catalog Number: 26848-1-AP	GenBank Accession Number: BC011031	Purification Method: Antigen affinity purification
Concentration: 600 ug/ml	GeneID (NCBI): 1392	Recommended Dilutions: WB 1:500-1:2000 IHC 1:400-1:1600 IF-P 1:200-1:800
Source: Rabbit	UNIPROT ID: P06850	
Isotype: IgG	Full Name: CRH/CRF	
Immunogen Catalog Number: AG25226	Calculated MW: 21 kDa	
	Observed MW: 27 kDa	

Applications

Tested Applications: WB, IHC, IF-P, ELISA	Positive Controls: WB : rat brain tissue, mouse brain tissue IHC : human placenta tissue, IF-P : rat brain tissue,
Cited Applications: WB, IF	
Species Specificity: human, mouse, rat	
Cited Species: rat	

Note-IHC: suggested antigen retrieval with TE buffer pH 9.0; (*) Alternatively, antigen retrieval may be performed with citrate buffer pH 6.0

Background Information

CRH, also called CRF or corticoliberin, is a peptide hormone and neurotransmitter involved in the stress response. Marked reduction in this protein has been observed in association with Alzheimer disease. In addition to production in the hypothalamus, this protein is also synthesized in peripheral tissues, such as T lymphocytes and is highly expressed in the placenta. In the placenta it is a marker that determines the length of gestation and the timing of parturition and delivery.

Notable Publications

Author	Pubmed ID	Journal	Application
Yabin Lin	39929458	Int J Biol Macromol	IF
Xinyuan Wang	39593298	Food Res Int	WB

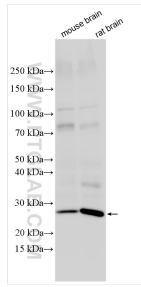
Storage

Storage:
Store at -20°C. Stable for one year after shipment.
Storage Buffer:
PBS with 0.02% sodium azide and 50% glycerol pH 7.3.
Aliquoting is unnecessary for -20°C storage

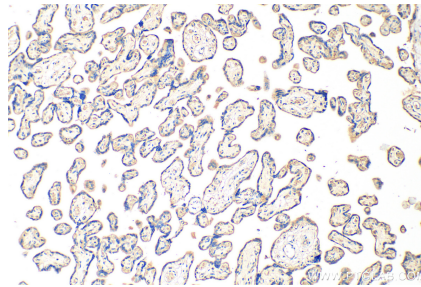
For technical support and original validation data for this product please contact:
T: 4006900926 E: Proteintech-CN@ptglab.com W: ptgcn.com

This product is exclusively available under Proteintech Group brand and is not available to purchase from any other manufacturer.

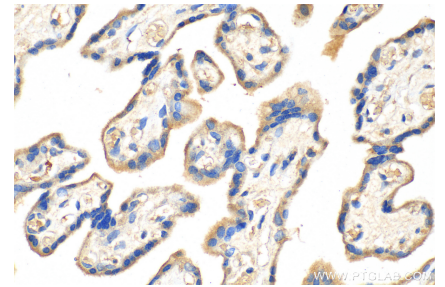
Selected Validation Data



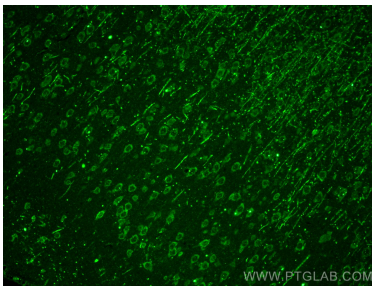
Various lysates were subjected to SDS PAGE followed by western blot with 26848-1-AP (CRH/CRF antibody) at dilution of 1:1000 incubated at room temperature for 1.5 hours.



Immunohistochemical analysis of paraffin-embedded human placenta tissue slide using 26848-1-AP (CRH/CRF antibody) at dilution of 1:800 (under 10x lens). Heat mediated antigen retrieval with Tris-EDTA buffer (pH 9.0).



Immunohistochemical analysis of paraffin-embedded human placenta tissue slide using 26848-1-AP (CRH/CRF antibody) at dilution of 1:800 (under 40x lens). Heat mediated antigen retrieval with Tris-EDTA buffer (pH 9.0).



Immunofluorescent analysis of (4% PFA) fixed rat brain tissue using CRH/CRF antibody (26848-1-AP) at dilution of 1:400 and CoraLite®488-Conjugated AffiniPure Goat Anti-Rabbit IgG(H+L).