

SLC12A9 Polyclonal antibody

Catalog Number: 26827-1-AP

Basic Information

Catalog Number:

26827-1-AP

Size:

450 µg/ml

Source:

Rabbit

Isotype:

IgG

Immunogen Catalog Number:

AG25351

GenBank Accession Number:

BC000154

GeneID (NCBI):

56996

UNIPROT ID:

Q9BXP2

Full Name:

solute carrier family 12
(potassium/chloride transporters),
member 9

Calculated MW:

96 kDa

Observed MW:

101 kDa

Purification Method:

Antigen affinity purification

Recommended Dilutions:

WB 1:500-1:2000

Applications

Tested Applications:

WB, ELISA

Species Specificity:

human, mouse

Positive Controls:

WB : HEK-293 cells, MCF-7 cells, LNCaP cells, mouse
kidney tissue

Background Information

SLC12A9, also known as CCC6 and CIP1, belongs to the SLC12A transporter family. SLC12A9 encodes a 914 amino acid protein with predicted 12 TM domains, two N-glycosylation sites between TM5 and TM6, and a carboxyl terminus PKC phosphorylation site (PMID: 23506871). SLC12A9 regulates ion gradients across renal tubules and maintains cell volume (PMID: 27530302). SLC12A9 is highly expressed in placenta, brain, and kidney.

Storage

Storage:

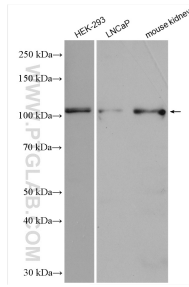
Store at -20°C. Stable for one year after shipment.

Storage Buffer:

PBS with 0.02% sodium azide and 50% glycerol pH 7.3.

Aliquoting is unnecessary for -20°C storage

Selected Validation Data



Various lysates were subjected to SDS PAGE followed by western blot with 26827-1-AP (SLC12A9 antibody) at dilution of 1:1000 incubated at room temperature for 1.5 hours.