

For Research Use Only

# MS4A2 Polyclonal antibody

Catalog Number: 26808-1-AP



## Basic Information

**Catalog Number:**

26808-1-AP

**Size:**

550 µg/ml

**Source:**

Rabbit

**Isotype:**

IgG

**Immunogen Catalog Number:**

AG25196

**GenBank Accession Number:**

BC074843

**GeneID (NCBI):**

2206

**UNIPROT ID:**

Q01362

**Full Name:**

membrane-spanning 4-domains, subfamily A, member 2 (Fc fragment of IgE, high affinity I, receptor for; beta polypeptide)

**Calculated MW:**

244 aa, 27 kDa

**Observed MW:**

25-27 kDa

**Purification Method:**

Antigen affinity purification

**Recommended Dilutions:**

WB 1:1000-1:4000

## Applications

**Tested Applications:**

WB, ELISA

**Species Specificity:**

human, mouse

**Positive Controls:**

WB: mouse lung tissue,

## Background Information

MS4A is a new gene family with four transmembrane-spanning domains and is crucial for cell differentiation, signaling, and cell cycle control. The membrane-spanning 4 domains, superfamily A, number 2 gene (MS4A2, also named as the beta-chain of the high affinity IgE receptor or Fc $\epsilon$ RI $\beta$  gene, FCER1B), as a member of the MS4A family, is a component of the high-affinity IgE receptor, with co-immunoprecipitation experiments demonstrating that it associates with FcRI $\alpha$  and FcR $\gamma$  to form a tetrameric receptor complex ( $\alpha\beta\gamma 2$ ) that is expressed on mast cells and basophils at high density (PMID: 25835430). MS4A2 is strongly associated with the prognosis of lung adenocarcinoma and lung cancer brain metastases (PMID: 37533433).

## Storage

**Storage:**

Store at -20°C. Stable for one year after shipment.

**Storage Buffer:**

PBS with 0.02% sodium azide and 50% glycerol pH 7.3.

Aliquoting is unnecessary for -20°C storage

For technical support and original validation data for this product please contact:

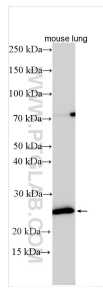
T: 4006900926

E: Proteintech-CN@ptglab.com

W: ptgcn.com

**This product is exclusively available under Proteintech Group brand and is not available to purchase from any other manufacturer.**

## Selected Validation Data



mouse lung tissue lysates were subjected to SDS PAGE followed by western blot with 26808-1-AP (MS4A2 antibody) at dilution of 1:2000 incubated at room temperature for 1.5 hours.