

For Research Use Only

# SLC39A1/ZIP1 Polyclonal antibody, PBS Only

Catalog Number: 26799-1-PBS



## Basic Information

Catalog Number:

26799-1-PBS

Concentration:

1 mg/ml

Source:

Rabbit

Isotype:

IgG

Immunogen Catalog Number:

AG24937

GenBank Accession Number:

BC003152

GeneID (NCBI):

27173

UNIPROT ID:

Q9NY26

Full Name:

solute carrier family 39 (zinc transporter), member 1

Calculated MW:

324 aa, 34 kDa

Observed MW:

34 kDa

Purification Method:

Antigen affinity purification

## Applications

Tested Applications:

WB, Indirect ELISA

Species Specificity:

human

## Background Information

SLC39A1, also known as ZIP1, is a member of the zinc-iron permease family. It is localized to the cell membrane and acts as a zinc uptake transporter. SLC39A1 mediates the influx of Zn<sup>2+</sup> into cells from extracellular space (PMID: 16844077). SLC39A1 is the major importer of zinc from circulating blood plasma into prostate cells (PMID: 12888280). In mesenchymal stem cells (MSCs), ZIP1 may exist as a dimer with a molecular weight of 70kD (PMID: 16203195).

## Storage

Storage:

Store at -80°C.

The product is shipped with ice packs. Upon receipt, store it immediately at -80°C

Storage Buffer:

PBS only, pH7.3

For technical support and original validation data for this product please contact:

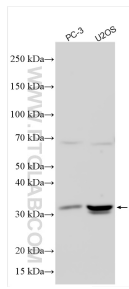
T: 4006900926

E: [Proteintech-CN@ptglab.com](mailto:Proteintech-CN@ptglab.com)

W: [ptgcn.com](http://ptgcn.com)

This product is exclusively available under Proteintech Group brand and is not available to purchase from any other manufacturer.

## Selected Validation Data



Various lysates were subjected to SDS PAGE followed by western blot with 26799-1-AP (ZIP1 antibody) at dilution of 1:2000 incubated at room temperature for 1.5 hours. This data was developed using the same antibody clone with 26799-1-PBS in a different storage buffer formulation.