

For Research Use Only

# GRLF1 Polyclonal antibody

Catalog Number: 26789-1-AP

Featured Product

4 Publications



## Basic Information

**Catalog Number:**

26789-1-AP

**Size:**

1000 µg/ml

**Source:**

Rabbit

**Isotype:**

IgG

**Immunogen Catalog Number:**

AG25353

**GenBank Accession Number:**

BC150257

**GeneID (NCBI):**

2909

**UNIPROT ID:**

Q9NRY4

**Full Name:**

glucocorticoid receptor DNA binding factor 1

**Observed MW:**

172 kDa

**Purification Method:**

Antigen affinity purification

**Recommended Dilutions:**

WB 1:2000-1:12000

IHC 1:50-1:500

## Applications

**Tested Applications:**

IHC, WB, ELISA

**Cited Applications:**

WB, IF

**Species Specificity:**

human

**Cited Species:**

human, mouse

**Positive Controls:**

WB: A549 cells, HeLa cells

IHC: human colon tissue, human brain tissue

**Note-IHC: suggested antigen retrieval with TE buffer pH 9.0; (\*) Alternatively, antigen retrieval may be performed with citrate buffer pH 6.0**

## Background Information

GRLF1 is also named as ARHGAP35, p190ARHOGAP, KIAA1722, P190A and GRF1. GRLF1 is a kind of Rho GTPase-activating protein, and it binds several acidic phospholipids which inhibits the Rho GAP activity to promote the Rac GAP activity (PMID:19673492). This binding is inhibited by phosphorylation by PRKCA (PMID:19673492). GRLF1 is involved in cell differentiation as well as cell adhesion and migration. And it plays an important role in retinal tissue morphogenesis, neural tube fusion, midline fusion of the cerebral hemispheres and mammary gland branching morphogenesis.

## Notable Publications

Author	Pubmed ID	Journal	Application
Daici Chen	31332286	Oncogene	WB,IF
Zhixiong Liu	35143418	J Clin Invest	WB
Xuemeng Shi	33928090	Front Cell Dev Biol	WB

## Storage

**Storage:**

Store at -20°C. Stable for one year after shipment.

**Storage Buffer:**

PBS with 0.02% sodium azide and 50% glycerol pH 7.3.

Aliquoting is unnecessary for -20°C storage

For technical support and original validation data for this product please contact:

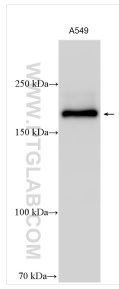
T: 4006900926

E: Proteintech-CN@ptglab.com

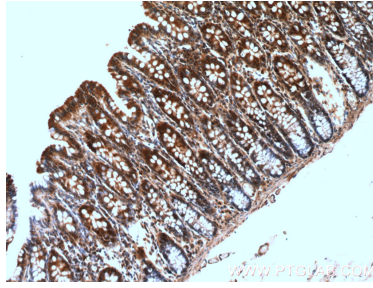
W: ptgcn.com

This product is exclusively available under Proteintech Group brand and is not available to purchase from any other manufacturer.

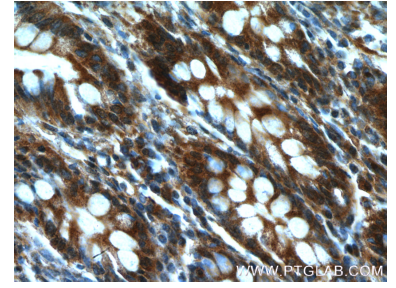
## Selected Validation Data



A549 cells were subjected to SDS PAGE followed by western blot with 26789-1-AP (GRLF1 antibody) at dilution of 1:6000 incubated at room temperature for 1.5 hours.



Immunohistochemical analysis of paraffin-embedded human colon tissue slide using 26789-1-AP (GRLF1 antibody) at dilution of 1:200 (under 10x lens).



Immunohistochemical analysis of paraffin-embedded human colon tissue slide using 26789-1-AP (GRLF1 antibody) at dilution of 1:200 (under 40x lens).