

For Research Use Only

YTHDF1 Polyclonal antibody

Catalog Number: 26787-1-AP

5 Publications



Basic Information

Catalog Number:

26787-1-AP

Size:

300 µg/ml

Source:

Rabbit

Isotype:

IgG

Immunogen Catalog Number:

AG25347

GenBank Accession Number:

BC050284

GeneID (NCBI):

54915

UNIPROT ID:

Q9BYJ9

Full Name:

YTH domain family, member 1

Calculated MW:

559 aa, 61 kDa

Observed MW:

60 kDa

Purification Method:

Antigen affinity purification

Recommended Dilutions:

WB 1:500-1:1000

IP 0.5-4.0 µg for 1.0-3.0 mg of total protein lysate

Applications

Tested Applications:

WB, IP, ELISA

Cited Applications:

WB, IHC, RIP

Species Specificity:

human

Cited Species:

human, mouse

Positive Controls:

WB : HepG2 cells,

IP : HepG2 cells,

Background Information

YTHDF1, also named YTH domain-containing family protein 1 or C20orf21, is a 559 amino acid protein, which localizes in the cytoplasm. YTHDF1 specifically recognizes and binds N6-methyladenosine (m6A)-containing mRNAs, and promotes mRNA translation efficiency. m6A is a modification present at the internal sites of mRNAs and some non-coding RNAs and plays a role in the efficiency of mRNA splicing, processing, and stability. YTHDF1 acts as a regulator of mRNA translation efficiency: promotes ribosome loading to m6A-containing mRNAs and interacts with translation initiation factors eIF3 (EIF3A or EIF3B) to facilitate translation initiation. YTHDF1 exists two isoforms and the calculated molecular weight of isoforms are 61 kDa and 21 kDa.

Notable Publications

Author	Pubmed ID	Journal	Application
Xiaohui Bai	35939138	Cell Mol Neurobiol	WB,IHC
Chaopeng Ou	39304892	BMC Med	WB,IHC
Danyu Chen	38900944	Cancer Res	WB,RIP,IHC

Storage

Storage:

Store at -20°C. Stable for one year after shipment.

Storage Buffer:

PBS with 0.02% sodium azide and 50% glycerol pH 7.3.

Aliquoting is unnecessary for -20°C storage

For technical support and original validation data for this product please contact:

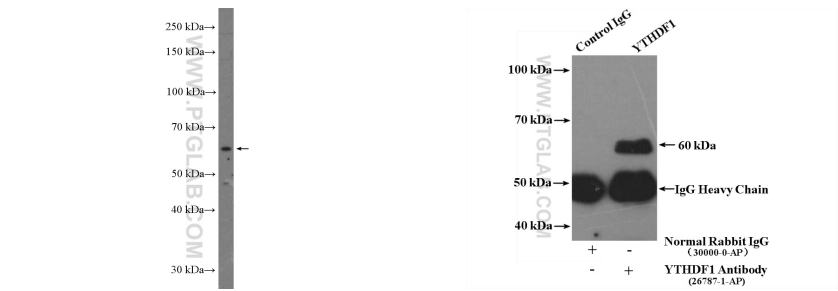
T: 4006900926

E: Proteintech-CN@ptglab.com

W: ptgcn.com

This product is exclusively available under Proteintech Group brand and is not available to purchase from any other manufacturer.

Selected Validation Data



HepG2 cells were subjected to SDS PAGE followed by western blot with 26787-1-AP (YTHDF1 Antibody) at dilution of 1:600 incubated at room temperature for 1.5 hours.

IP result of anti-YTHDF1 (IP:26787-1-AP, 4ug; Detection:26787-1-AP 1:300) with HepG2 cells lysate 3200ug.