

For Research Use Only

# NaPi-IIa Polyclonal antibody

Catalog Number: 26783-1-AP



## Basic Information

**Catalog Number:**

26783-1-AP

**Size:**

750 µg/ml

**Source:**

Rabbit

**Isotype:**

IgG

**Immunogen Catalog Number:**

AG24807

**GenBank Accession Number:**

BC053349

**GeneID (NCBI):**

6569

**UNIPROT ID:**

Q06495

**Full Name:**

solute carrier family 34 (sodium phosphate), member 1

**Observed MW:**

70-75 kDa, 30-35 kDa

**Purification Method:**

Antigen affinity purification

**Recommended Dilutions:**

WB 1:1000-1:4000

## Applications

**Tested Applications:**

WB, ELISA

**Species Specificity:**

human, mouse, rat

**Positive Controls:**

WB: mouse kidney tissue, mouse lung tissue, rat kidney tissue

## Background Information

NaPi-IIa, also known as Npt2a (SLC34A1), is an electrogenic Na<sup>+</sup>-dependent Pi cotransporter expressed in the brush border membranes (BBM) of renal proximal tubules. NaPi-IIa could be detected with an apparent molecular weight 75 kDa, corresponding to the full length glycosylated protein, together with a lower molecular weight 37 kDa known to be a N-terminal proteolytic fragment which is also glycosylated (PMID:36074191).

## Storage

**Storage:**

Store at -20°C. Stable for one year after shipment.

**Storage Buffer:**

PBS with 0.02% sodium azide and 50% glycerol pH 7.3.

Aliquoting is unnecessary for -20°C storage

For technical support and original validation data for this product please contact:

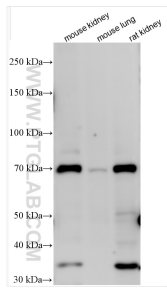
T: 4006900926

E: [Proteintech-CN@ptglab.com](mailto:Proteintech-CN@ptglab.com)

W: [ptgcn.com](http://ptgcn.com)

**This product is exclusively available under Proteintech Group brand and is not available to purchase from any other manufacturer.**

## Selected Validation Data



Various lysates were subjected to SDS PAGE followed by western blot with 26783-1-AP (NaPi-IIa antibody) at dilution of 1:2000 incubated at room temperature for 1.5 hours.