

For Research Use Only

SUFU Polyclonal antibody

Catalog Number: 26759-1-AP

Featured Product

9 Publications



Basic Information

Catalog Number:

26759-1-AP

Size:

600 µg/ml

Source:

Rabbit

Isotype:

IgG

Immunogen Catalog Number:

AG25200

GenBank Accession Number:

BC013291

GeneID (NCBI):

51684

UNIPROT ID:

Q9UMX1

Full Name:

suppressor of fused homolog
(Drosophila)

Calculated MW:

54 kDa

Observed MW:

50 kDa

Purification Method:

Antigen affinity purification

Recommended Dilutions:

WB 1:1000-1:4000

IP 0.5-4.0 µg for 1.0-3.0 mg of total
protein lysate

IHC 1:50-1:500

IF 1:50-1:500

Applications

Tested Applications:

IF/ICC, IHC, IP, WB, ELISA

Cited Applications:

WB, IF, IHC

Species Specificity:

human, mouse, rat

Cited Species:

human, rat, mouse

**Note-IHC: suggested antigen retrieval with
TE buffer pH 9.0; (*) Alternatively, antigen
retrieval may be performed with citrate
buffer pH 6.0**

Positive Controls:

WB : HeLa cells, C6 cells, HEK-293 cells, NIH/3T3 cells

IP : NIH/3T3 cells,

IHC : human kidney tissue,

IF : HeLa cells,

Background Information

Sufu (Suppressor of fused) is a central regulator of Hh (Hedgehog) signaling and acts as a tumor suppressor by maintaining the Gli (Glioma-associated oncogene homolog) transcription factors inactive. Loss of Sufu function promotes tumorigenesis.

Notable Publications

Author	Pubmed ID	Journal	Application
Xiao Ding	31519191	J Exp Clin Cancer Res	WB,IHC
Leah Schembs	35584663	Cell Rep	IF
Liwei Zhang	32550895	Theranostics	WB

Storage

Storage:

Store at -20°C. Stable for one year after shipment.

Storage Buffer:

PBS with 0.02% sodium azide and 50% glycerol pH 7.3.

Aliquoting is unnecessary for -20°C storage

For technical support and original validation data for this product please contact:

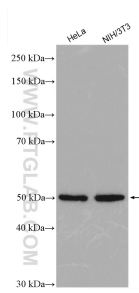
T: 4006900926

E: Proteintech-CN@ptglab.com

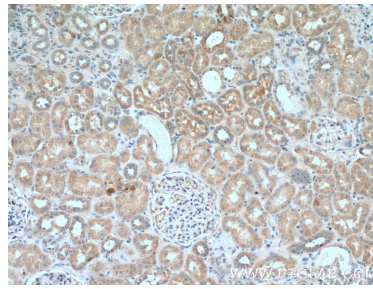
W: ptgcn.com

This product is exclusively available under Proteintech Group brand and is not available to purchase from any other manufacturer.

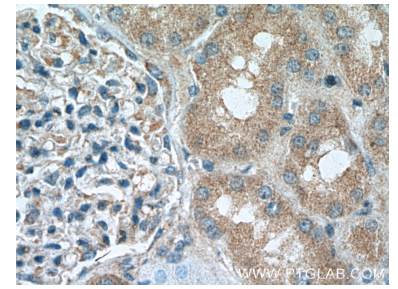
Selected Validation Data



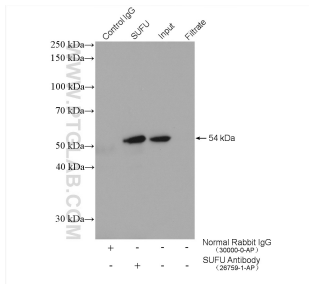
Various lysates were subjected to SDS PAGE followed by western blot with 26759-1-AP (SUFU antibody) at dilution of 1:2000 incubated at room temperature for 1.5 hours.



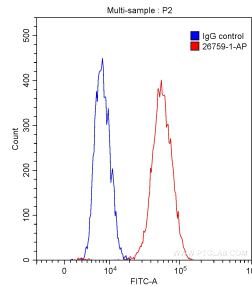
Immunohistochemical analysis of paraffin-embedded human kidney tissue slide using 26759-1-AP (SUFU Antibody) at dilution of 1:200 (under 10x lens).



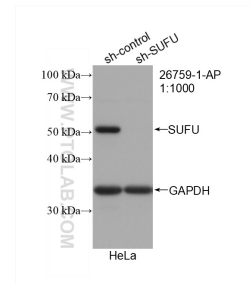
Immunohistochemical analysis of paraffin-embedded human kidney tissue slide using 26759-1-AP (SUFU Antibody) at dilution of 1:200 (under 40x lens).



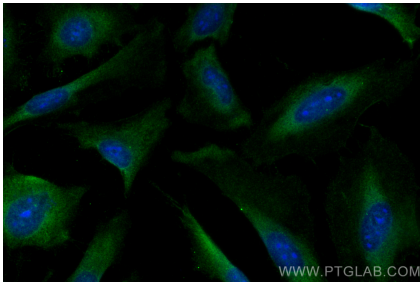
IP result of anti-SUFU (IP:26759-1-AP, 4ug; Detection:26759-1-AP 1:1000) with NIH/3T3 cells lysate 1600 ug.



1x10⁶ HEK-293 cells were intracellularly stained with 0.20 ug/test Anti-Human SUFU (26759-1-AP) (red) or 0.20 ug control antibody (blue) and CoraLite®488-Conjugated AffiniPure Goat Anti-Rabbit IgG(H+L) with dilution 1:1000. Fixed with 90% MeOH.



WB result of SUFU antibody (26759-1-AP; 1:1000; incubated at room temperature for 1.5 hours) with sh-Control and sh-SUFU transfected HeLa cells.



Immunofluorescent analysis of (-20°C Ethanol) fixed HeLa cells using SUFU antibody (26759-1-AP) at dilution of 1:200 and CoraLite®488-Conjugated AffiniPure Goat Anti-Rabbit IgG(H+L).