

For Research Use Only

CENPA Polyclonal antibody

Catalog Number: 26754-1-AP **2 Publications**



Basic Information

Catalog Number: 26754-1-AP	GenBank Accession Number: BC002703	Purification Method: Antigen affinity purification
Size: 650 µg/ml	GeneID (NCBI): 1058	Recommended Dilutions: WB 1:500-1:1000
Source: Rabbit	UNIPROT ID: P49450	
Isotype: IgG	Full Name: centromere protein A	
Immunogen Catalog Number: AG25025	Calculated MW: 16 kDa	
	Observed MW: 16 kDa	

Applications

Tested Applications: WB, ELISA	Positive Controls: WB : MCF-7 cells, Jurkat cells
Cited Applications: IHC	
Species Specificity: human	
Cited Species: human	

Background Information

Centromere protein-A (CENP-A) is a Histone H3-like protein that contains a C-terminal H3-like domain, required for centromere localization of CENP-A, and an antigenic N-terminal domain. CENP-A, originally isolated from HeLa cells, is essential for kinetochore targeting of CENP-C. In the presence of DNA, CENP-A forms an octameric complex with histones H4, H2A and H2B. CENP-A specifically localizes to active centromeres and is a component of specialized centromeric nucleosomes, on which kinetochores are assembled. CENP-A is essential for nucleosomal packaging of centromeric DNA at interphase and functions as a centromere formation marker on the chromosome.

Notable Publications

Author	Pubmed ID	Journal	Application
Lingyu Zhang	33995639	J Cancer	IHC
Yuan-Xiang Shi	36944275	Transl Oncol	IHC

Storage

Storage:
Store at -20°C. Stable for one year after shipment.
Storage Buffer:
PBS with 0.02% sodium azide and 50% glycerol pH 7.3.
Aliquoting is unnecessary for -20°C storage

For technical support and original validation data for this product please contact:

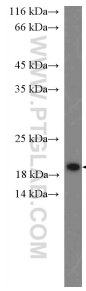
T: 4006900926

E: Proteintech-CN@ptglab.com

W: ptgcn.com

This product is exclusively available under Proteintech Group brand and is not available to purchase from any other manufacturer.

Selected Validation Data



MCF-7 cells were subjected to SDS PAGE followed by western blot with 26754-1-AP (CENPA Antibody) at dilution of 1:600 incubated at room temperature for 1.5 hours.