

For Research Use Only

# ENTPD5 Polyclonal antibody

Catalog Number: 26746-1-AP



## Basic Information

### Catalog Number:

26746-1-AP

### Size:

1000  $\mu$ g/ml

### Source:

Rabbit

### Isotype:

IgG

### Immunogen Catalog Number:

AG25022

### GenBank Accession Number:

BC130485

### GeneID (NCBI):

957

### UNIPROT ID:

O75356

### Full Name:

ectonucleoside triphosphate  
diphosphohydrolase 5

### Observed MW:

47 kDa

### Purification Method:

Antigen affinity purification

### Recommended Dilutions:

WB 1:500-1:2000

IP 0.5-4.0  $\mu$ g for 1.0-3.0 mg of total  
protein lysate

IHC 1:50-1:500

## Applications

### Tested Applications:

IHC, IP, WB, ELISA

### Species Specificity:

human, mouse

**Note-IHC: suggested antigen retrieval with  
TE buffer pH 9.0; (\*) Alternatively, antigen  
retrieval may be performed with citrate  
buffer pH 6.0**

### Positive Controls:

WB : mouse liver tissue,

IP : mouse liver tissue,

IHC : human liver tissue,

## Background Information

### Storage

#### Storage:

Store at -20°C. Stable for one year after shipment.

#### Storage Buffer:

PBS with 0.02% sodium azide and 50% glycerol pH 7.3.

Aliquoting is unnecessary for -20°C storage

For technical support and original validation data for this product please contact:

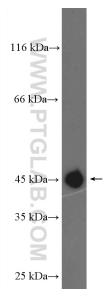
T: 4006900926

E: [Proteintech-CN@ptglab.com](mailto:Proteintech-CN@ptglab.com)

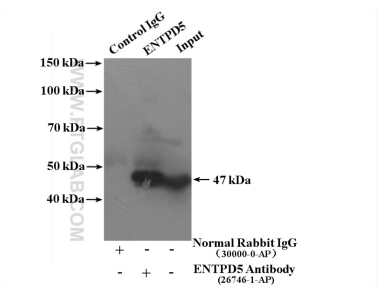
W: [ptgcn.com](http://ptgcn.com)

This product is exclusively available under Proteintech Group brand and is not available to purchase from any other manufacturer.

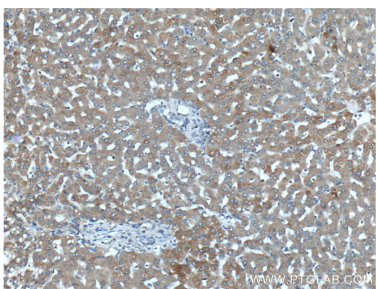
Selected Validation Data



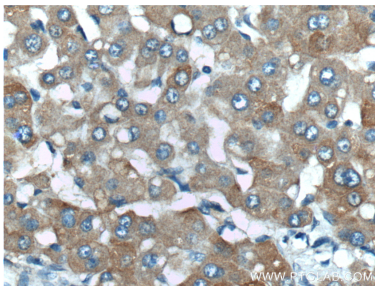
mouse liver tissue were subjected to SDS PAGE followed by western blot with 26746-1-AP (ENTPD5 Antibody) at dilution of 1:1000 incubated at room temperature for 1.5 hours.



IP result of anti-ENTPD5 (IP:26746-1-AP, 4ug; Detection:26746-1-AP 1:300) with mouse liver tissue lysate 6000ug.



Immunohistochemical analysis of paraffin-embedded human liver tissue slide using 26746-1-AP (ENTPD5 Antibody) at dilution of 1:200 (under 10x lens).



Immunohistochemical analysis of paraffin-embedded human liver tissue slide using 26746-1-AP (ENTPD5 Antibody) at dilution of 1:200 (under 40x lens).