

# WDR35 Polyclonal antibody

Catalog Number: 26701-1-AP

## Basic Information

**Catalog Number:**

26701-1-AP

**Size:**

300 µg/ml

**Source:**

Rabbit

**Isotype:**

IgG

**Immunogen Catalog Number:**

AG24965

**GenBank Accession Number:**

BC036659

**GeneID (NCBI):**

57539

**UNIPROT ID:**

Q9P2LO

**Full Name:**

WD repeat domain 35

**Calculated MW:**

1170 aa, 132 kDa

**Purification Method:**

Antigen affinity purification

**Recommended Dilutions:**

IF/ICC 1:200-1:800

## Applications

**Tested Applications:**

IF/ICC, ELISA

**Species Specificity:**

human, Canine

**Positive Controls:**

IF/ICC : MDCK cells, hTERT-RPE1 cells

## Background Information

WDR35, a component of the IFT complex A (IFT-A), is required for retrograde ciliary transport and entry into cilia of G protein-coupled receptors (GPCRs). It is involved in ciliogenesis and ciliary protein trafficking (PMID:21473986, PMID:28400947, PMID:29220510). It may promote CASP3 activation and TNF-stimulated apoptosis (PMID: 20193664).

## Storage

**Storage:**

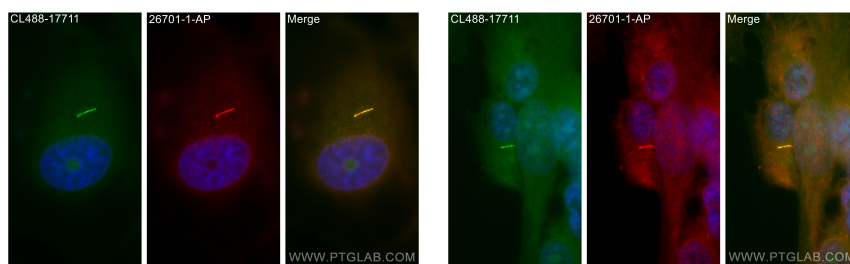
Store at -20°C. Stable for one year after shipment.

**Storage Buffer:**

PBS with 0.02% sodium azide and 50% glycerol pH 7.3.

Aliquoting is unnecessary for -20°C storage

## Selected Validation Data



Immunofluorescent analysis of (-20°C Methanol) fixed MDCK cells using WDR35 antibody (26701-1-AP) at dilution of 1:400 and CoraLite®594-Conjugated AffiniPure Goat Anti-Rabbit IgG(H+L), CoraLite® Plus 488 ARL13B antibody (CL488-17711, green).

Immunofluorescent analysis of (-20°C Methanol) fixed hTERT-RPE1 cells using WDR35 antibody (26701-1-AP) at dilution of 1:400 and CoraLite®594-Conjugated AffiniPure Goat Anti-Rabbit IgG(H+L), CoraLite® Plus 488 ARL13B antibody (CL488-17711, green).