

For Research Use Only

INPPL1 Polyclonal antibody

Catalog Number: 26678-1-AP



Basic Information

Catalog Number:

26678-1-AP

Size:

700 µg/ml

Source:

Rabbit

Isotype:

IgG

Immunogen Catalog Number:

AG24790

GenBank Accession Number:

BC140853

GeneID (NCBI):

3636

UNIPROT ID:

O15357

Full Name:

inositol polyphosphate phosphatase-like 1

Calculated MW:

1258 aa, 139 kDa

Observed MW:

150 kDa

Purification Method:

Antigen affinity purification

Recommended Dilutions:

WB 1:500-1:3000

IP 0.5-4.0 µg for 1.0-3.0 mg of total protein lysate

IHC 1:250-1:1000

Applications

Tested Applications:

IHC, IP, WB, ELISA

Species Specificity:

human, mouse

Note-IHC: suggested antigen retrieval with TE buffer pH 9.0; (*) Alternatively, antigen retrieval may be performed with citrate buffer pH 6.0

Positive Controls:

WB : HeLa cells, NIH/3T3 cells

IP : HeLa cells,

IHC : mouse stomach tissue,

Background Information

Storage

Storage:

Store at -20°C. Stable for one year after shipment.

Storage Buffer:

PBS with 0.02% sodium azide and 50% glycerol pH 7.3.

Aliquoting is unnecessary for -20°C storage

For technical support and original validation data for this product please contact:

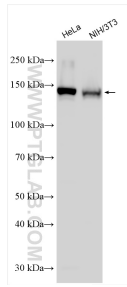
T: 4006900926

E: Proteintech-CN@ptglab.com

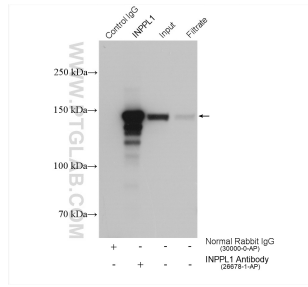
W: ptgcn.com

This product is exclusively available under Proteintech Group brand and is not available to purchase from any other manufacturer.

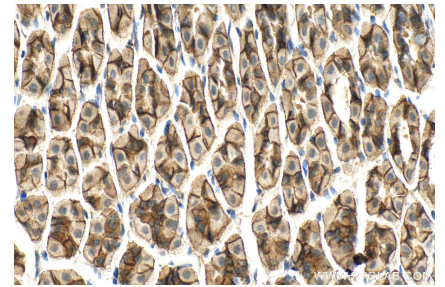
Selected Validation Data



Various lysates were subjected to SDS PAGE followed by western blot with 26678-1-AP (INPPL1 antibody) at dilution of 1:1500 incubated at room temperature for 1.5 hours.



IP result of anti-INPPL1 (IP:26678-1-AP, 4ug; Detection:26678-1-AP 1:800) with HeLa cells lysate 2520 ug.



Immunohistochemical analysis of paraffin-embedded mouse stomach tissue slide using 26678-1-AP (INPPL1 antibody) at dilution of 1:500 (under 40x lens). Heat mediated antigen retrieval with Tris-EDTA buffer (pH 9.0).