

For Research Use Only

Calsequestrin 1 Polyclonal antibody



Catalog Number: 26665-1-AP

4 Publications

Basic Information

Catalog Number:

26665-1-AP

Size:

850 µg/ml

Source:

Rabbit

Isotype:

IgG

Immunogen Catalog Number:

AG24684

GenBank Accession Number:

BC022289

GeneID (NCBI):

844

UNIPROT ID:

P31415

Full Name:

calsequestrin 1 (fast-twitch, skeletal muscle)

Calculated MW:

390 aa, 45 kDa

Observed MW:

45 kDa, 63 kDa

Purification Method:

Antigen affinity purification

Recommended Dilutions:

WB 1:1000-1:6000

IHC 1:50-1:500

Applications

Tested Applications:

IHC, WB, ELISA

Cited Applications:

WB, IHC

Species Specificity:

human, mouse

Cited Species:

human, mouse

Note-IHC: suggested antigen retrieval with TE buffer pH 9.0; (*) Alternatively, antigen retrieval may be performed with citrate buffer pH 6.0

Positive Controls:

WB: mouse heart tissue,

IHC: human skeletal muscle tissue,

Background Information

Notable Publications

Author	Pubmed ID	Journal	Application
Patricia Franzka	34124155	Front Mol Biosci	WB
Nagakatsu Harada	32451822	J Muscle Res Cell Motil	WB
Yingchao Shi	35167494	JCI Insight	WB

Storage

Storage:

Store at -20°C. Stable for one year after shipment.

Storage Buffer:

PBS with 0.02% sodium azide and 50% glycerol pH 7.3.

Aliquoting is unnecessary for -20°C storage

For technical support and original validation data for this product please contact:

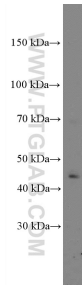
T: 4006900926

E: Proteintech-CN@ptglab.com

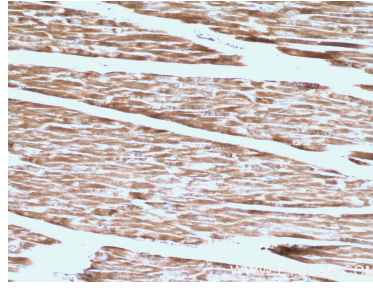
W: ptgcn.com

This product is exclusively available under Proteintech Group brand and is not available to purchase from any other manufacturer.

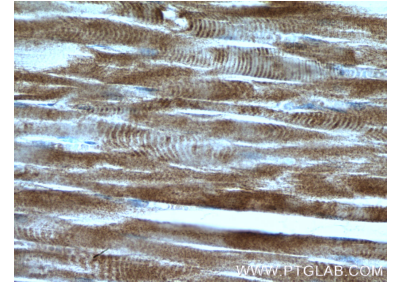
Selected Validation Data



mouse heart tissue were subjected to SDS PAGE followed by western blot with 26665-1-AP (Calsequestrin antibody at dilution of 1:3000 incubated at room temperature for 1.5 hours.



Immunohistochemical analysis of paraffin-embedded human skeletal muscle tissue slide using 26665-1-AP(Calsequestrin antibody) at dilution of 1:200 (under 10x lens).



Immunohistochemical analysis of paraffin-embedded human skeletal muscle tissue slide using 26665-1-AP(Calsequestrin antibody) at dilution of 1:200 (under 40x lens).