

For Research Use Only

EGFL7 Polyclonal antibody, PBS Only

Catalog Number: 26661-1-PBS



Basic Information

Catalog Number: 26661-1-PBS	GenBank Accession Number: BC012377	Purification Method: Antigen affinity purification
Concentration: 1mg/ml	GeneID (NCBI): 51162	
Source: Rabbit	UNIPROT ID: Q9UHF1	
Isotype: IgG	Full Name: EGF-like-domain, multiple 7	
Immunogen Catalog Number: AG24693	Calculated MW: 273 aa, 30 kDa	
	Observed MW: 30 kDa	

Applications

Tested Applications:
WB, IHC, ELISA

Species Specificity:
human

Background Information

Epidermal growth factor-like protein 7 (EGFL7, also known as MEGF7, ZNEU1, and VE-STATIN) is a proangiogenic factor that has been widely described as having a vital role in tubulogenesis and regulation of angiogenesis, mainly during embryogenesis organogenesis (PMID: 22160377; 15162510). It also can reduce central nervous system inflammation and may play a role in tumorigenesis (PMID: 29483510; 37490307).

Storage

Storage:
Store at -80°C.
The product is shipped with ice packs. Upon receipt, store it immediately at -80°C

Storage Buffer:
PBS only, pH7.3

For technical support and original validation data for this product please contact:

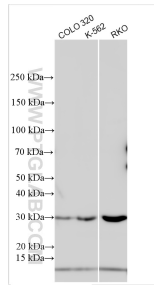
T: 4006900926

E: Proteintech-CN@ptglab.com

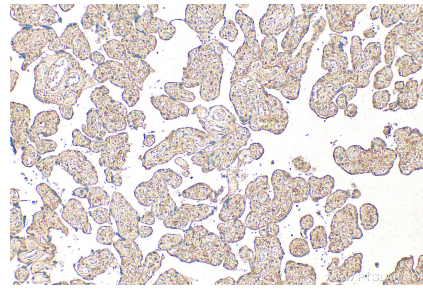
W: ptgcn.com

This product is exclusively available under Proteintech Group brand and is not available to purchase from any other manufacturer.

Selected Validation Data



Various lysates were subjected to SDS PAGE followed by western blot with 26661-1-AP (EGFL7 antibody) at dilution of 1:1500 incubated at room temperature for 1.5 hours. This data was developed using the same antibody clone with 26661-1-PBS in a different storage buffer formulation.



Immunohistochemical analysis of paraffin-embedded human placenta tissue slide using 26661-1-AP (EGFL7 antibody) at dilution of 1:200 (under 10x lens). Heat mediated antigen retrieval with Tris-EDTA buffer (pH 9.0). This data was developed using the same antibody clone with 26661-1-PBS in a different storage buffer formulation.