

For Research Use Only

# TMEM138 Polyclonal antibody, PBS Only

Catalog Number: 26642-1-PBS



## Basic Information

Catalog Number:

26642-1-PBS

Source:

Rabbit

Isotype:

IgG

Immunogen Catalog Number:

AG24487

GenBank Accession Number:

BC005201

GeneID (NCBI):

51524

UNIPROT ID:

Q9NPIO

Full Name:

transmembrane protein 138

Calculated MW:

162 aa, 19 kDa

Purification Method:

Antigen affinity purification

## Applications

Tested Applications:

IF/ICC, ELISA

Species Specificity:

human

## Background Information

The TMEM138 gene encodes a protein with multiple transmembrane domains that is expressed in various tissues and involved in regulating biological processes. While its exact cellular localization and function are not fully understood, studies suggest it may impact neural development and disease occurrence by influencing intracellular signal transduction pathways, cytoskeleton dynamics, and membrane protein transport mechanisms. Tmem138 and Tmem216 are arranged in a head-to-tail configuration on human chromosome 11 and mouse chromosome 19, sharing intergenic regulatory elements. Tmem138 is localized at the ciliary base and axoneme, while Tmem216 is primarily in the BBs in IMCD3 cells. (PMID: 35394880, PMID: 40432436)

## Storage

Storage:

Store at -20°C. Stable for one year after shipment.

**The product is shipped with ice packs. Upon receipt, store it immediately at -80°C**

Storage Buffer:

PBS with 0.02% sodium azide and 50% glycerol, pH7.3

Aliquoting is unnecessary for -20°C storage

For technical support and original validation data for this product please contact:

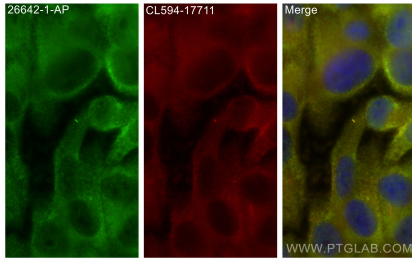
T: 4006900926

E: Proteintech-CN@ptglab.com

W: ptgcn.com

**This product is exclusively available under Proteintech Group brand and is not available to purchase from any other manufacturer.**

## Selected Validation Data



Immunofluorescent analysis of (-20°C Methanol) fixed hTERT-RPE1 cells using TMEM138 antibody (26642-1-AP) at dilution of 1:400 and CoraLite®488-Conjugated Goat Anti-Rabbit IgG(H+L) (SA00013-2), CoraLite®594 ARL13B antibody (CL594-17711, red). This data was developed using the same antibody clone with 26642-1-PBS in a different storage buffer formulation.