

For Research Use Only

SLC26A1 Polyclonal antibody

Catalog Number: 26611-1-AP

1 Publications



Basic Information

Catalog Number:

26611-1-AP

Size:

900 µg/ml

Source:

Rabbit

Isotype:

IgG

Immunogen Catalog Number:

AG24306

GenBank Accession Number:

BC015517

GeneID (NCBI):

10861

UNIPROT ID:

Q9H2B4

Full Name:

solute carrier family 26 (sulfate transporter), member 1

Calculated MW:

75 kDa

Observed MW:

70 kDa-85 kDa

Purification Method:

Antigen affinity purification

Recommended Dilutions:

WB 1:500-1:1000

IP 0.5-4.0 µg for 1.0-3.0 mg of total protein lysate

Applications

Tested Applications:

WB, IP, ELISA

Cited Applications:

WB

Species Specificity:

human, mouse

Cited Species:

human

Positive Controls:

WB : HEK-293 cells, mouse spleen tissue

IP : mouse kidney tissue,

Background Information

Notable Publications

| Author | Pubmed ID | Journal | Application |
|---------------|-----------|------------------|-------------|
| Martin Walter | 36410050 | Chem Res Toxicol | WB |

Storage

Storage:

Store at -20°C. Stable for one year after shipment.

Storage Buffer:

PBS with 0.02% sodium azide and 50% glycerol pH 7.3.

Aliquoting is unnecessary for -20°C storage

For technical support and original validation data for this product please contact:

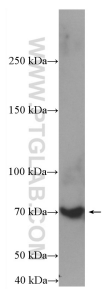
T: 4006900926

E: Proteintech-CN@ptglab.com

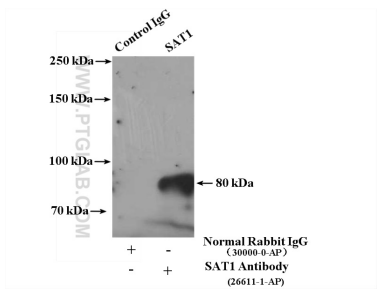
W: ptgcn.com

This product is exclusively available under Proteintech Group brand and is not available to purchase from any other manufacturer.

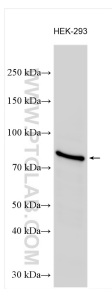
Selected Validation Data



mouse spleen tissue were subjected to SDS PAGE followed by western blot with 26611-1-AP (SAT1 antibody) at dilution of 1:300 incubated at room temperature for 1.5 hours.



IP result of anti-SAT1 (IP:26611-1-AP, 4ug; Detection:26611-1-AP 1:1000) with mouse kidney tissue lysate 5400ug.



HEK-293 cells were subjected to SDS PAGE followed by western blot with 26611-1-AP (SAT1 antibody) at dilution of 1:600 incubated at room temperature for 1.5 hours.