

For Research Use Only

LOXL1 Polyclonal antibody

Catalog Number: 26608-1-AP

2 Publications



Basic Information

Catalog Number:

26608-1-AP

Size:

550 ug/ml

Source:

Rabbit

Isotype:

IgG

Immunogen Catalog Number:

AG24293

GenBank Accession Number:

BC015090

GeneID (NCBI):

4016

UNIPROT ID:

Q08397

Full Name:

lysyl oxidase-like 1

Calculated MW:

63 kDa

Observed MW:

63-70 kDa

Purification Method:

Antigen affinity purification

Recommended Dilutions:

WB 1:500-1:2000

Applications

Tested Applications:

WB, ELISA

Cited Applications:

WB

Species Specificity:

human

Cited Species:

human

Positive Controls:

WB : MCF-7 cells,

Background Information

Three LOXL1 variants are seen: a band of 64 kDa matching the predicted full-length form lacking the secretory signal peptide, a band of 67 kDa presumed to be the full-length form with the signal peptide, and a band of 36 kDa matching the cleavage product.

Notable Publications

Author	Pubmed ID	Journal	Application
Ni Luh Gede Yoni Komalasari	37091157	Front Oncol	WB
Huiyong Li	31938310	Int J Clin Exp Pathol	WB

Storage

Storage:

Store at -20°C. Stable for one year after shipment.

Storage Buffer:

PBS with 0.02% sodium azide and 50% glycerol pH 7.3.

Aliquoting is unnecessary for -20°C storage

For technical support and original validation data for this product please contact:

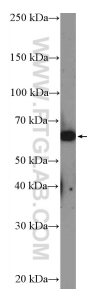
T: 4006900926

E: Proteintech-CN@ptglab.com

W: ptgcn.com

This product is exclusively available under Proteintech Group brand and is not available to purchase from any other manufacturer.

Selected Validation Data



MCF-7 cells were subjected to SDS PAGE followed by western blot with 26608-1-AP (LOXL1 Antibody) at dilution of 1:1000 incubated at room temperature for 1.5 hours.