

CRB1 Polyclonal antibody

Catalog Number: 26598-1-AP

Basic Information

Catalog Number: 26598-1-AP	GenBank Accession Number: BC136271	Purification Method: Antigen affinity purification
Concentration: 800 ug/ml	GeneID (NCBI): 23418	Recommended Dilutions: IHC 1:50-1:500
Source: Rabbit	UNIPROT ID: P82279	IF-P 1:50-1:500
Isotype: IgG	Full Name: crumbs homolog 1 (Drosophila)	IF/ICC 1:400-1:1600
Immunogen Catalog Number: AG24512	Calculated MW: 1406 aa, 154 kDa	
	Observed MW: 150 kDa	

Applications

Tested Applications: IHC, IF/ICC, IF-P, ELISA	Positive Controls:
Species Specificity: human, mouse	IHC : mouse eye tissue, mouse brain tissue
Note-IHC: suggested antigen retrieval with TE buffer pH 9.0; (*) Alternatively, antigen retrieval may be performed with citrate buffer pH 6.0	IF-P : mouse eye tissue,
	IF/ICC : SH-SY5Y cells,

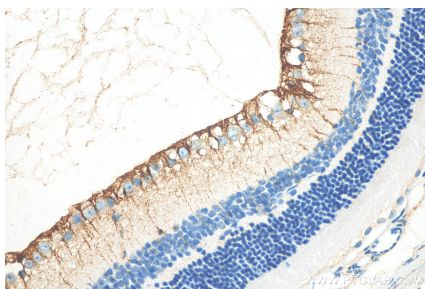
Background Information

CRB1, also known as protein crumbs homolog 1, is homologous to Drosophila Crumbs, a protein that is essential for establishing and maintaining apico-basal polarity in epithelia derived from the ectoderm (PMID: 2344615). CRB1 protein is a single transmembrane protein with a large extracellular part, containing three laminin A G domains and 19 epidermal growth-factor-like domains (PMID: 15494026, 18407265, 11734541). The expression of CRB1 is restricted to the retina and brain (PMID: 10508521). Mutations in CRB1 gene cause severe retinal dystrophies, ranging from retinitis pigmentosa (RP) to Leber congenital amaurosis (LCA) (PMID: 11734541).

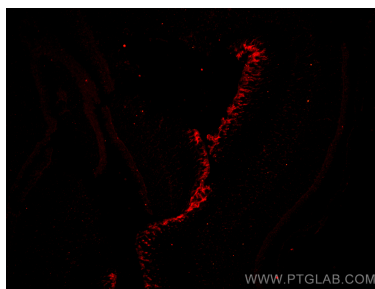
Storage

Storage:
Store at -20°C. Stable for one year after shipment.
Storage Buffer:
PBS with 0.02% sodium azide and 50% glycerol pH 7.3.
Aliquoting is unnecessary for -20°C storage

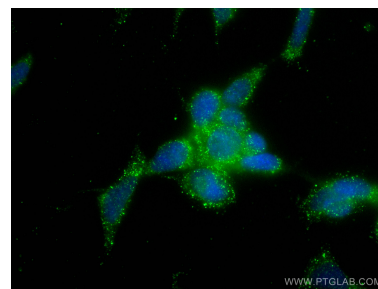
Selected Validation Data



Immunohistochemical analysis of paraffin-embedded mouse eye tissue slide using 26598-1-AP (CRB1 antibody) at dilution of 1:200 (under 40x lens). Heat mediated antigen retrieval with Tris-EDTA buffer (pH 9.0).



Immunofluorescent analysis of (4% PFA) fixed paraffin-embedded mouse eye tissue using CRB1 antibody (26598-1-AP) at dilution of 1:200 and CoraLite®594-Conjugated Goat Anti-Rabbit IgG(H+L) (SA00013-4). Heat mediated antigen retrieval with Tris-EDTA buffer (pH 9.0).



Immunofluorescent analysis of (-20°C Ethanol) fixed SH-SY5Y cells using CRB1 antibody (26598-1-AP) at dilution of 1:800 and CoraLite®488-Conjugated AffiniPure Goat Anti-Rabbit IgG(H+L).