

For Research Use Only

OTX1 Polyclonal antibody

Catalog Number: 26595-1-AP

Featured Product



Basic Information

Catalog Number:

26595-1-AP

Size:

1000 μ g/ml

Source:

Rabbit

Isotype:

IgG

Immunogen Catalog Number:

AG24252

GenBank Accession Number:

BC007621

GeneID (NCBI):

5013

UNIPROT ID:

P32242

Full Name:

orthodenticle homeobox 1

Calculated MW:

37 kDa

Observed MW:

37-43 kDa

Purification Method:

Antigen affinity purification

Recommended Dilutions:

WB 1:500-1:1000

Applications

Tested Applications:

WB, ELISA

Species Specificity:

human

Positive Controls:

WB : COLO 320 cells, HEK-293 cells

Background Information

OTX1, also named as Orthodenticle homolog 1, is a 354 amino acid protein, which belongs to the paired homeobox family. OTX1 is expressed in brain and detected in the anterior part of the neural fetal retina. OTX1 probably plays a role in the development of the brain and the sense organs.

Storage

Storage:

Store at -20°C. Stable for one year after shipment.

Storage Buffer:

PBS with 0.02% sodium azide and 50% glycerol pH 7.3.

Aliquoting is unnecessary for -20°C storage

For technical support and original validation data for this product please contact:

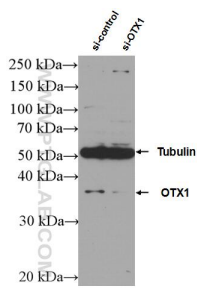
T: 4006900926

E: Proteintech-CN@ptglab.com

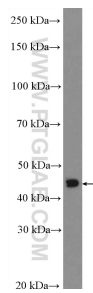
W: ptgcn.com

This product is exclusively available under Proteintech Group brand and is not available to purchase from any other manufacturer.

Selected Validation Data



WB result of OTX1 antibody (26595-1-AP; 1:600; incubated at room temperature for 1.5 hours) with sh-Control and sh-OTX1 transfected HEK-293 cells.



COLO 320 cells were subjected to SDS PAGE followed by western blot with 26595-1-AP (OTX1 Antibody) at dilution of 1:600 incubated at room temperature for 1.5 hours.