

For Research Use Only

p70(S6K) Polyclonal antibody

Catalog Number: 26587-1-AP

2 Publications



Basic Information

Catalog Number:

26587-1-AP

Size:

500 µg/ml

Source:

Rabbit

Isotype:

IgG

Immunogen Catalog Number:

AG24073

GenBank Accession Number:

BC053365

GeneID (NCBI):

6198

UNIPROT ID:

P23443

Full Name:

ribosomal protein S6 kinase, 70kDa, polypeptide 1

Calculated MW:

59 kDa

Observed MW:

60-75 kDa

Purification Method:

Antigen affinity purification

Recommended Dilutions:

WB 1:200-1:1000

IP 0.5-4.0 µg for 1.0-3.0 mg of total protein lysate

IHC 1:50-1:500

IF/ICC 1:50-1:500

Applications

Tested Applications:

IF/ICC, IHC, IP, WB, ELISA

Cited Applications:

WB

Species Specificity:

human

Cited Species:

mouse, pig

Note-IHC: suggested antigen retrieval with TE buffer pH 9.0; (*) Alternatively, antigen retrieval may be performed with citrate buffer pH 6.0

Positive Controls:

WB : MCF-7 cells, A549 cells

IP : A549 cells,

IHC : human lung cancer tissue, human breast cancer tissue

IF/ICC : A549 cells,

Background Information

RPS6KB1(Ribosomal protein S6 kinase beta-1) is also named as STK14A, p70 S6KA and belongs to the S6 kinase subfamily. RPS6KB1 is a major substrate of MTOR and acts as a crucial effector of MTOR signaling pathway. It plays a key role in cell growth and proliferation by regulating INS sensitivity, metabolism, protein synthesis, and cell cycle. RPS6KB1 may play an important role in the progression of HCC and could serve as a potential molecular target for HCC therapy (PMID:22684641). RPS6KB1 is a 70 kDa protein and has 5 isoforms with the calculated molecular mass of 51-59kDa produced by alternative initiation.

Notable Publications

Author	Pubmed ID	Journal	Application
Jane K Naberhuis	31503514	Am J Physiol Endocrinol Metab	WB
Jinlong Zhang	39177123	J Agric Food Chem	WB

Storage

Storage:

Store at -20°C. Stable for one year after shipment.

Storage Buffer:

PBS with 0.02% sodium azide and 50% glycerol pH 7.3.

Aliquoting is unnecessary for -20°C storage

For technical support and original validation data for this product please contact:

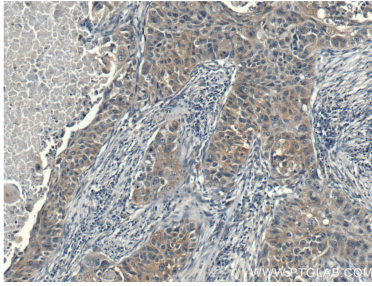
T: 4006900926

E: Proteintech-CN@ptglab.com

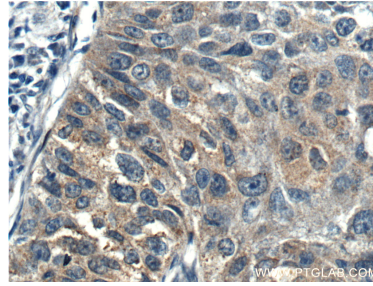
W: ptgcn.com

This product is exclusively available under Proteintech Group brand and is not available to purchase from any other manufacturer.

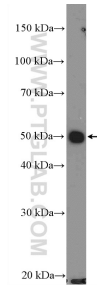
Selected Validation Data



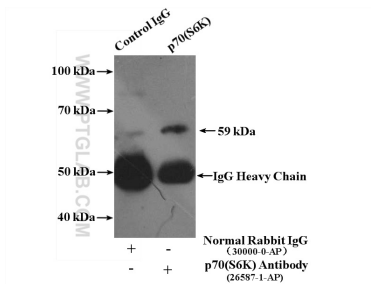
Immunohistochemical analysis of paraffin-embedded human lung cancer tissue slide using 26587-1-AP (p70(S6K) Antibody) at dilution of 1:200 (under 10x lens).



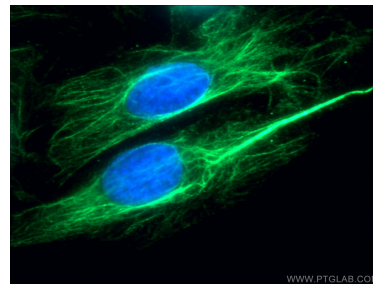
Immunohistochemical analysis of paraffin-embedded human lung cancer tissue slide using 26587-1-AP (p70(S6K) Antibody) at dilution of 1:200 (under 40x lens).



MCF-7 cells were subjected to SDS PAGE followed by western blot with 26587-1-AP (p70(S6K) Antibody) at dilution of 1:300 incubated at room temperature for 1.5 hours.



IP result of anti-p70(S6K) (IP:26587-1-AP, 4ug;
Detection:26587-1-AP 1:300) with A549 cells lysate
1600ug.



Immunofluorescent analysis of (-20°C Ethanol) fixed A549 cells using 26587-1-AP (p70(S6K) antibody) at dilution of 1:50 and Alexa Fluor 488-conjugated Goat Anti-Rabbit IgG(H+L).