

For Research Use Only

# Phospholipase C Beta 1 Polyclonal antibody



Catalog Number: 26551-1-AP **3 Publications**

## Basic Information

**Catalog Number:**

26551-1-AP

**Size:**

700 µg/ml

**Source:**

Rabbit

**Isotype:**

IgG

**Immunogen Catalog Number:**

AG24750

**GenBank Accession Number:**

BC069420

**GeneID (NCBI):**

23236

**UNIPROT ID:**

Q9NQ66

**Full Name:**

phospholipase C, beta 1  
(phosphoinositide-specific)

**Calculated MW:**

1216 aa, 139 kDa

**Observed MW:**

139 kDa

**Purification Method:**

Antigen affinity purification

**Recommended Dilutions:**

WB 1:500-1:2000

IHC 1:50-1:500

## Applications

**Tested Applications:**

IHC, WB, ELISA

**Cited Applications:**

WB, IHC

**Species Specificity:**

human, rat, mouse

**Cited Species:**

human

**Note-IHC: suggested antigen retrieval with TE buffer pH 9.0; (\*) Alternatively, antigen retrieval may be performed with citrate buffer pH 6.0**

**Positive Controls:**

WB: mouse brain tissue, rat brain tissue

IHC: human gliomas tissue, human breast cancer tissue

## Background Information

PLCB1 catalyzes the formation of inositol 1,4,5-trisphosphate and diacylglycerol from phosphatidylinositol 4,5-bisphosphate. This reaction uses calcium as a cofactor and plays an important role in the intracellular transduction of many extracellular signals. PLCB1 is activated by two G-protein alpha subunits, alpha-q and alpha-11.

## Notable Publications

Author	Pubmed ID	Journal	Application
Linchong Sun	37500770	Nat Chem Biol	WB, IHC
Yulin Wang	37208557	Biochem Genet	WB
Luyun Zhang	37265700	Front Endocrinol (Lausanne)	WB

## Storage

**Storage:**

Store at -20°C. Stable for one year after shipment.

**Storage Buffer:**

PBS with 0.02% sodium azide and 50% glycerol pH 7.3.

Aliquoting is unnecessary for -20°C storage

For technical support and original validation data for this product please contact:

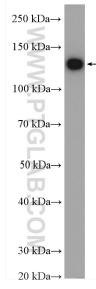
T: 4006900926

E: Proteintech-CN@ptglab.com

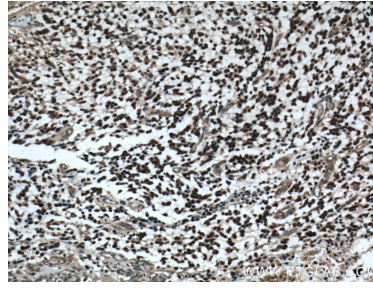
W: ptgcn.com

**This product is exclusively available under Proteintech Group brand and is not available to purchase from any other manufacturer.**

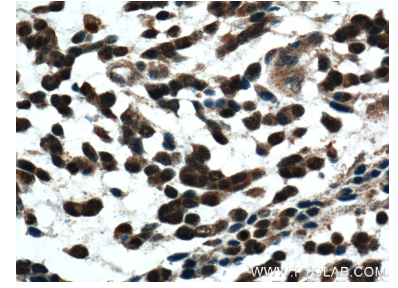
## Selected Validation Data



mouse brain tissue were subjected to SDS PAGE followed by western blot with 26551-1-AP (Phospholipase C beta 1 antibody) at dilution of 1:1000 incubated at room temperature for 1.5 hours.



Immunohistochemical analysis of paraffin-embedded human gliomas tissue slide using 26551-1-AP (Phospholipase C beta 1 antibody at dilution of 1:200 (under 10x lens).



Immunohistochemical analysis of paraffin-embedded human gliomas tissue slide using 26551-1-AP (Phospholipase C beta 1 antibody at dilution of 1:200 (under 40x lens).