

PPM1D Polyclonal antibody

Catalog Number: 26532-1-AP

Basic Information

Catalog Number:

26532-1-AP

Size:

350 µg/ml

Source:

Rabbit

Isotype:

IgG

Immunogen Catalog Number:

AG24751

GenBank Accession Number:

BC060877

GeneID (NCBI):

8493

UNIPROT ID:

O15297

Full Name:

protein phosphatase 1D magnesium-dependent, delta isoform

Observed MW:

67 kDa

Purification Method:

Antigen affinity purification

Recommended Dilutions:

WB 1:500-1:2000

IF/ICC 1:50-1:500

Applications

Tested Applications:

IF/ICC, WB, ELISA

Species Specificity:

human, mouse, Rat

Positive Controls:

WB : MCF-7 cells, mouse lung tissue, rat testis tissue

IF/ICC : MCF-7 cells,

Background Information

PPM1D (also known as PP2Cd and WIP1) is a member of the PPM family, which is characterized by Mg²⁺/Mn²⁺-dependent activity and relative insensitivity to okadaic acid. The PPM1D gene is aberrantly amplified in a range of common cancers and encodes a protein phosphatase that is a potential therapeutic target (PMID: 17700519). This antibody can be detected two bands of 47 and 67 Kda.

Storage

Storage:

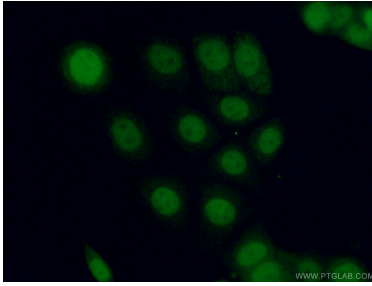
Store at -20°C. Stable for one year after shipment.

Storage Buffer:

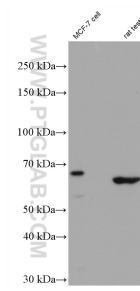
PBS with 0.02% sodium azide and 50% glycerol pH 7.3.

Aliquoting is unnecessary for -20°C storage

Selected Validation Data



Immunofluorescent analysis of (4% PFA) fixed MCF-7 cells using 26532-1-AP (PPM1D antibody) at dilution of 1:50 and Alexa Fluor 488-conjugated AffiniPure Goat Anti-Rabbit IgG(H+L).



MCF-7 cells were subjected to SDS PAGE followed by western blot with 26532-1-AP (PPM1D antibody) at dilution of 1:1500 incubated at room temperature for 1.5 hours.