

For Research Use Only

BCAM Polyclonal antibody

Catalog Number: 26528-1-AP



Basic Information

Catalog Number:

26528-1-AP

Size:

800 ug/ml

Source:

Rabbit

Isotype:

IgG

Immunogen Catalog Number:

AG24753

GenBank Accession Number:

BC050450

GeneID (NCBI):

4059

UNIPROT ID:

P50895

Full Name:

basal cell adhesion molecule
(Lutheran blood group)

Calculated MW:

67 kDa

Observed MW:

67 kDa, 78-85 kDa

Purification Method:

Antigen affinity purification

Recommended Dilutions:

WB 1:2000-1:16000

Applications

Tested Applications:

WB, ELISA

Species Specificity:

human

Positive Controls:

WB : A431 cells, HT-29 cells, human placenta tissue

Background Information

Basal cell adhesion molecule (Lu/BCAM) is a membrane-bound glycoprotein of the immunoglobulin superfamily (IgSF), functioning as a receptor for the extracellular matrix protein, laminin. BCAM (Lutheran/basal cell-adhesion molecule, a glycoprotein) belongs to the immunoglobulin superfamily which contains both Lu blood group and BCAM tumor-associated antigens. Proteomics analysis suggests that BCAM might be a potential biomarker for pancreatic cancer (PMID: 19199705). BCAM, involved in cell adhesion and migration, can also promote tumor metastasis and has been elucidated to play a functional role in the metastasis of thyroid cancer and gastric cancer (PMID: 10728810, 35941663). De-glycosylated BCAM has a predicted molecular weight of 67 kDa. Two BCAM glycoprotein (gp) isoforms are present on human RBCs, Lu (85 kDa) and Lu(v13) (78 kDa); they result from the alternative splicing of intron 13 and differ by the lengths of their cytoplasmic domains (PMID: 23160466).

Storage

Storage:

Store at -20°C. Stable for one year after shipment.

Storage Buffer:

PBS with 0.02% sodium azide and 50% glycerol pH 7.3.

Aliquoting is unnecessary for -20°C storage

For technical support and original validation data for this product please contact:

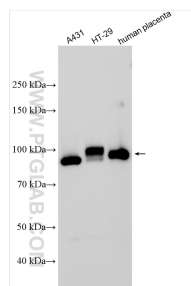
T: 4006900926

E: Proteintech-CN@ptglab.com

W: ptgcn.com

This product is exclusively available under Proteintech Group brand and is not available to purchase from any other manufacturer.

Selected Validation Data



Various lysates were subjected to SDS PAGE followed by western blot with 26528-1-AP (BCAM antibody) at dilution of 1:8000 incubated at room temperature for 1.5 hours.