

For Research Use Only

Vinculin Polyclonal antibody

Catalog Number: 26520-1-AP 106 Publications



Basic Information

Catalog Number:	26520-1-AP	GenBank Accession Number:	BC039174	Purification Method:	Antigen affinity purification
Concentration:	750 ug/ml	GeneID (NCBI):	7414	Recommended Dilutions:	WB 1:5000-1:60000
Source:	Rabbit	UNIPROT ID:	P18206		IHC 1:1000-1:4000
Isotype:	IgG	Full Name:	vinculin		IF/ICC 1:200-1:800
Immunogen Catalog Number:	AG24942	Calculated MW:	1133 aa, 124 kDa		
		Observed MW:	124 kDa		

Applications

Tested Applications:	WB, IHC, IF/ICC, FC (Intra), ELISA	Positive Controls:	
Cited Applications:	WB, IF	WB :	HEK-293 cells, HeLa cells, HepG2 cells, MDCK cells, NIH/3T3 cells, PC-12 cells, mouse heart tissue, rat heart tissue
Species Specificity:	human, mouse, rat, canine	IHC :	mouse colon tissue, human breast cancer tissue, human prostate cancer tissue, human skeletal muscle tissue, mouse skeletal muscle tissue
Cited Species:	human, mouse, rat, pig, rabbit, canine	IF/ICC :	HepG2 cells, A549 cells
Note-IHC: suggested antigen retrieval with TE buffer pH 9.0; (*) Alternatively, antigen retrieval may be performed with citrate buffer pH 6.0			

Background Information

Vinculin belongs to the vinculin/alpha-catenin family. It is an actin filament (F-actin)-binding protein which involved in cell-matrix adhesion and cell-cell adhesion. Vinculin regulates cell-surface E-cadherin expression and potentiates mechanosensing by the E-cadherin complex. It may also play important roles in cell morphology and locomotion. Vinculin is a 117-kDa, 1,066-amino-acid protein which is ubiquitously expressed. Its splice variant, metavinculin (124 kDa), is muscle-specific.

Notable Publications

Author	Pubmed ID	Journal	Application
Lan Zhang	34586738	Clin Transl Med	WB
Zhixiong Chen	30178500	Prostate	WB
Jingxuan Chen	36316321	Cell Death Discov	WB,IF

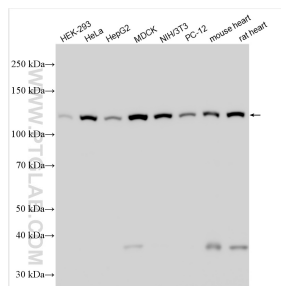
Storage

Storage:	Store at -20°C. Stable for one year after shipment.
Storage Buffer:	PBS with 0.02% sodium azide and 50% glycerol pH 7.3.
	Aliquoting is unnecessary for -20°C storage

For technical support and original validation data for this product please contact:
T: 4006900926 E: Proteintech-CN@ptglab.com W: ptgcn.com

This product is exclusively available under Proteintech Group brand and is not available to purchase from any other manufacturer.

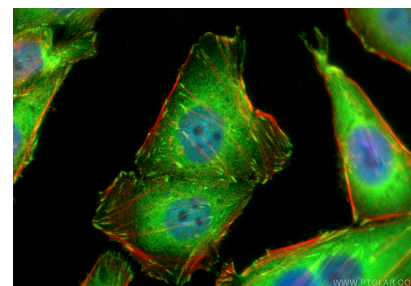
Selected Validation Data



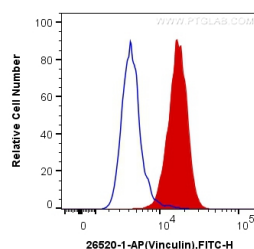
Various lysates were subjected to SDS PAGE followed by western blot with 26520-1-AP (Vinculin antibody) at dilution of 1:40000 incubated at room temperature for 1.5 hours.



Immunohistochemical analysis of paraffin-embedded mouse colon tissue slide using 26520-1-AP (Vinculin antibody) at dilution of 1:2000 (under 10x lens). Heat mediated antigen retrieval with Tris-EDTA buffer (pH 9.0).



Immunofluorescent analysis of (4% PFA) fixed HepG2 cells using Vinculin antibody (26520-1-AP) at dilution of 1:400 and CoraLite®488-Conjugated Goat Anti-Rabbit IgG(H+L) (SA00013-2), CL594-phalloidin (red).



1X10⁶ HepG2 cells were intracellularly stained with 0.2 ug Anti-Human Vinculin (26520-1-AP) and CoraLite®488-Conjugated AffiniPure Goat Anti-Rabbit IgG(H+L) at dilution 1:1000 (red), or 0.2 ug Control Antibody. Cells were fixed with 4% PFA and permeabilized with Flow Cytometry Perm Buffer (PF00011-C).