

For Research Use Only

LCE2B Polyclonal antibody

Catalog Number: 26512-1-AP



Basic Information

Catalog Number:	26512-1-AP	GenBank Accession Number:	BC117235	Purification Method:	Antigen affinity purification
Size:	300 µg/ml	GeneID (NCBI):	26239	Recommended Dilutions:	IHC 1:50-1:500
Source:	Rabbit	UNIPROT ID:	O14633		
Isotype:	IgG	Full Name:	late cornified envelope 2B		
Immunogen Catalog Number:	AG20213	Calculated MW:	110 aa, 11 kDa		

Applications

Tested Applications:	IHC, ELISA	Positive Controls:	
Species Specificity:	human	IHC :	human skin tissue,

Note-IHC: suggested antigen retrieval with TE buffer pH 9.0; (*) Alternatively, antigen retrieval may be performed with citrate buffer pH 6.0

Background Information

This protein is skin-specific.

Storage

Storage:
Store at -20°C. Stable for one year after shipment.
Storage Buffer:
PBS with 0.02% sodium azide and 50% glycerol pH 7.3.
Aliquoting is unnecessary for -20°C storage

For technical support and original validation data for this product please contact:

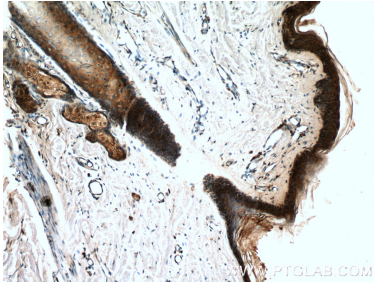
T: 4006900926

E: Proteintech-CN@ptglab.com

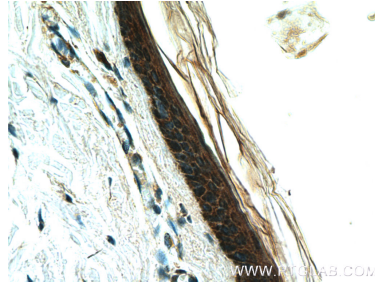
W: ptgcn.com

This product is exclusively available under Proteintech Group brand and is not available to purchase from any other manufacturer.

Selected Validation Data



Immunohistochemical analysis of paraffin-embedded human skin tissue slide using 26512-1-AP (LCE2B Antibody) at dilution of 1:200 (under 10x lens).



Immunohistochemical analysis of paraffin-embedded human skin tissue slide using 26512-1-AP (LCE2B Antibody) at dilution of 1:200 (under 40x lens).