

For Research Use Only

# OTC Polyclonal antibody

Catalog Number: 26470-1-AP **7 Publications**



## Basic Information

<b>Catalog Number:</b> 26470-1-AP	<b>GenBank Accession Number:</b> BC074745	<b>Purification Method:</b> Antigen affinity purification
<b>Size:</b> 900 µg/ml	<b>GeneID (NCBI):</b> 5009	<b>Recommended Dilutions:</b> WB 1:500-1:3000 IHC 1:300-1:1200
<b>Source:</b> Rabbit	<b>UNIPROT ID:</b> P00480	
<b>Isotype:</b> IgG	<b>Full Name:</b> ornithine carbamoyltransferase	
<b>Immunogen Catalog Number:</b> AG24186	<b>Calculated MW:</b> 354 aa, 40 kDa	
	<b>Observed MW:</b> 36-40 kDa	

## Applications

<b>Tested Applications:</b> IHC, WB, ELISA	<b>Positive Controls:</b> WB : mouse liver tissue, rat liver tissue IHC : human liver cancer tissue,
<b>Cited Applications:</b> WB, IF	
<b>Species Specificity:</b> human, mouse, rat	
<b>Cited Species:</b> human, mouse	
<b>Note-IHC: suggested antigen retrieval with TE buffer pH 9.0; (*) Alternatively, antigen retrieval may be performed with citrate buffer pH 6.0</b>	

## Background Information

Ornithine transcarbamylase (OTC) is a liver and intestinal mucosa-located, intramitochondrial, rate-limiting enzyme in the urea cycle. It catalyzes the reaction that converts ornithine and carbamoyl phosphate into citrulline, which is the second step of the urea cycle, to detoxify the ammonia produced from amino acid catabolism.

## Notable Publications

Author	Pubmed ID	Journal	Application
Weiwei Dai	36256480	J Clin Invest	WB,IF
Wei Wang	33957483	Biochem Biophys Res Commun	WB
Chaojun Yan	31177901	Autophagy	WB

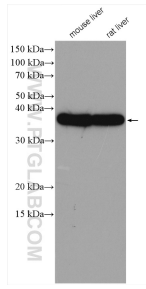
## Storage

**Storage:**  
Store at -20°C. Stable for one year after shipment.  
**Storage Buffer:**  
PBS with 0.02% sodium azide and 50% glycerol pH 7.3.  
Aliquoting is unnecessary for -20°C storage

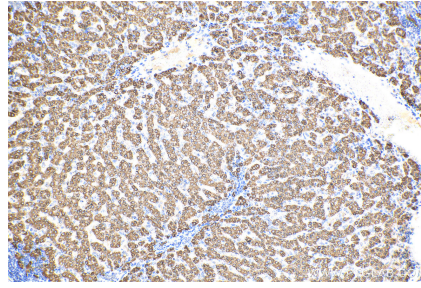
For technical support and original validation data for this product please contact:  
T: 4006900926 E: Proteintech-CN@ptglab.com W: ptgcn.com

This product is exclusively available under Proteintech Group brand and is not available to purchase from any other manufacturer.

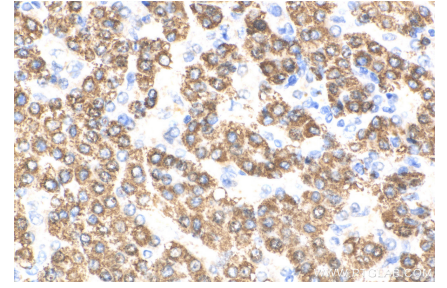
## Selected Validation Data



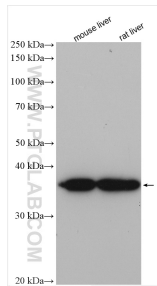
Various lysates were subjected to SDS PAGE followed by western blot with 26470-1-AP (OTC antibody) at dilution of 1:1500 incubated at room temperature for 1.5 hours.



Immunohistochemical analysis of paraffin-embedded human liver cancer tissue slide using 26470-1-AP (OTC antibody) at dilution of 1:600 (under 10x lens). Heat mediated antigen retrieval with Tris-EDTA buffer (pH 9.0).



Immunohistochemical analysis of paraffin-embedded human liver cancer tissue slide using 26470-1-AP (OTC antibody) at dilution of 1:600 (under 40x lens). Heat mediated antigen retrieval with Tris-EDTA buffer (pH 9.0).



Various lysates were subjected to SDS PAGE followed by western blot with 26470-1-AP (OTC antibody) at dilution of 1:6000 incubated at room temperature for 1.5 hours.