

For Research Use Only

Mitoferrin 1 Polyclonal antibody

Catalog Number: 26469-1-AP

19 Publications



Basic Information

Catalog Number:

26469-1-AP

Concentration:

800 µg/ml

Source:

Rabbit

Isotype:

IgG

Immunogen Catalog Number:

AG24876

GenBank Accession Number:

BC132799

GeneID (NCBI):

51312

UNIPROT ID:

Q9NYZ2

Full Name:

solute carrier family 25, member 37

Observed MW:

37 kDa

Purification Method:

Antigen affinity purification

Recommended Dilutions:

WB 1:500-1:3000

IHC 1:50-1:500

Applications

Tested Applications:

WB, IHC, ELISA

Cited Applications:

WB, IHC, IF

Species Specificity:

human, mouse, rat

Cited Species:

human, mouse, rat

Note-IHC: suggested antigen retrieval with TE buffer pH 9.0; (*) Alternatively, antigen retrieval may be performed with citrate buffer pH 6.0

Positive Controls:

WB : LO2 cells, mouse liver tissue, mouse spleen tissue, rat spleen tissue

IHC : human liver tissue,

Background Information

Notable Publications

Author	Pubmed ID	Journal	Application
Peina Wang	36179435	Redox Biol	WB
Nunziata Maio	30765471	Haematologica	WB
Tong Zhang	35121990	Nat Cancer	WB,IHC

Storage

Storage:

Store at -20°C. Stable for one year after shipment.

Storage Buffer:

PBS with 0.02% sodium azide and 50% glycerol pH 7.3.

Aliquoting is unnecessary for -20°C storage

For technical support and original validation data for this product please contact:

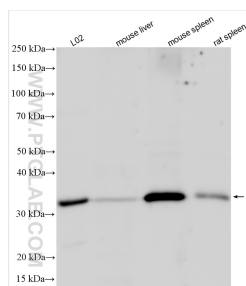
T: 4006900926

E: Proteintech-CN@ptglab.com

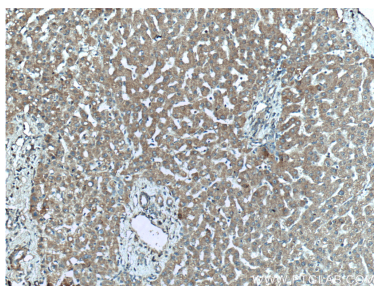
W: ptgcn.com

This product is exclusively available under Proteintech Group brand and is not available to purchase from any other manufacturer.

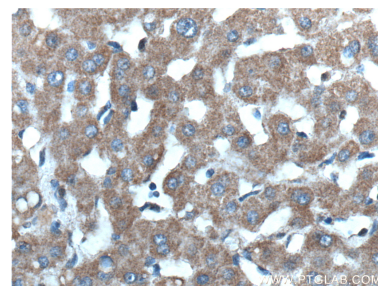
Selected Validation Data



Various lysates were subjected to SDS PAGE followed by western blot with 26469-1-AP (Mitoferrin 1 antibody) at dilution of 1:1500 incubated at room temperature for 1.5 hours.



Immunohistochemical analysis of paraffin-embedded human liver tissue slide using 26469-1-AP (Mitoferrin 1 antibody) at dilution of 1:200 (under 10x lens).



Immunohistochemical analysis of paraffin-embedded human liver tissue slide using 26469-1-AP (Mitoferrin 1 antibody) at dilution of 1:200 (under 40x lens).