

For Research Use Only

# EAF6 Polyclonal antibody

Catalog Number: 26465-1-AP

2 Publications



## Basic Information

Catalog Number:

26465-1-AP

Size:

800 µg/ml

Source:

Rabbit

Isotype:

IgG

Immunogen Catalog Number:

AG23971

GenBank Accession Number:

BC016328

GeneID (NCBI):

64769

UNIPROT ID:

Q9HAF1

Full Name:

chromosome 1 open reading frame

149

Observed MW:

22-28 kDa

Purification Method:

Antigen affinity purification

Recommended Dilutions:

WB 1:500-1:1000

IP 0.5-4.0 µg for 1.0-3.0 mg of total protein lysate

## Applications

Tested Applications:

IP, WB, ELISA

Cited Applications:

WB

Species Specificity:

human

Cited Species:

human, mouse

Positive Controls:

WB : HepG2 cells, HeLa cells, Jurkat cells

IP : HepG2 cells,

## Background Information

### Notable Publications

Author	Pubmed ID	Journal	Application
Matthew L Hemming	35499757	Cancer Discov	WB
Lifang Hu	33664480	Cell Death Differ	WB

## Storage

Storage:

Store at -20°C. Stable for one year after shipment.

Storage Buffer:

PBS with 0.02% sodium azide and 50% glycerol pH 7.3.

Aliquoting is unnecessary for -20°C storage

For technical support and original validation data for this product please contact:

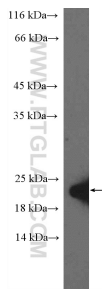
T: 4006900926

E: Proteintech-CN@ptglab.com

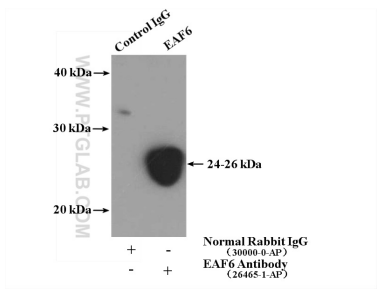
W: ptgcn.com

This product is exclusively available under Proteintech Group brand and is not available to purchase from any other manufacturer.

## Selected Validation Data



HepG2 cells were subjected to SDS PAGE followed by western blot with 26465-1-AP (EAF6 antibody at dilution of 1:600 incubated at room temperature for 1.5 hours.



IP result of anti-EAF6 (IP:26465-1-AP, 4ug; Detection:26465-1-AP 1:500) with HepG2 cells lysate 3480ug.