

For Research Use Only

# Ch-TOG Polyclonal antibody

Catalog Number: 26457-1-AP

1 Publications



## Basic Information

Catalog Number:

26457-1-AP

Size:

700 ug/ml

Source:

Rabbit

Isotype:

IgG

Immunogen Catalog Number:

AG24875

GenBank Accession Number:

BC120869

GeneID (NCBI):

9793

UNIPROT ID:

Q14008

Full Name:

cytoskeleton associated protein 5

Observed MW:

220 kDa

Purification Method:

Antigen affinity purification

Recommended Dilutions:

WB 1:1000-1:6000

IHC 1:500-1:2000

IF/ICC 1:50-1:500

## Applications

Tested Applications:

WB, IHC, IF/ICC, ELISA

Species Specificity:

human

**Note-IHC: suggested antigen retrieval with TE buffer pH 9.0; (\*) Alternatively, antigen retrieval may be performed with citrate buffer pH 6.0**

Positive Controls:

WB : HeLa cells, NCCIT cells, HepG2 cells, MCF-7 cells

IHC : mouse cerebellum tissue,

IF/ICC : HeLa cells,

## Background Information

Ch-TOG (colonic hepatic tumor-overexpressed gene), also known as XMAP215 or CKAP5, is a microtubule polymerase which can promotes cytoplasmic microtubule nucleation and elongation. Through interacting with Aurora-A and TACC3, it plays a major role in organizing spindle poles.

## Notable Publications

Author	Pubmed ID	Journal	Application
Angela Flavia Serpico	35081344	Cell Rep	

## Storage

Storage:

Store at -20°C. Stable for one year after shipment.

Storage Buffer:

PBS with 0.02% sodium azide and 50% glycerol pH 7.3.

Aliquoting is unnecessary for -20°C storage

For technical support and original validation data for this product please contact:

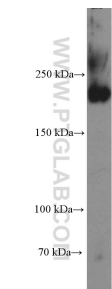
T: 4006900926

E: [Proteintech-CN@ptglab.com](mailto:Proteintech-CN@ptglab.com)

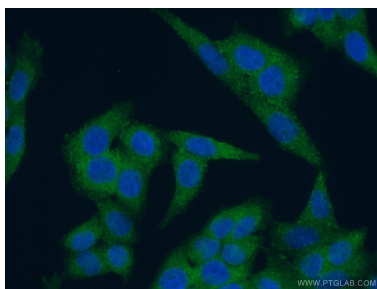
W: [ptgcn.com](http://ptgcn.com)

**This product is exclusively available under Proteintech Group brand and is not available to purchase from any other manufacturer.**

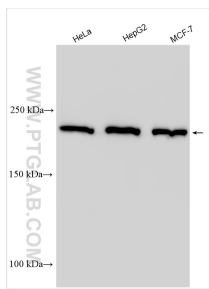
Selected Validation Data



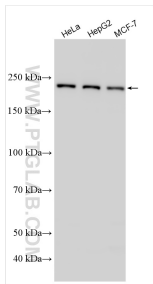
NCCIT cell were subjected to SDS PAGE followed by western blot with 26457-1-AP (Ch-TOG antibody at dilution of 1:1000 incubated at room temperature for 1.5 hours.



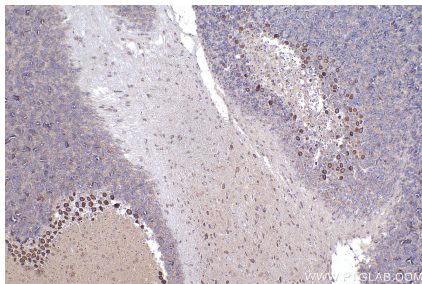
Immunofluorescent analysis of (4% PFA) fixed HeLa cells using 26457-1-AP (Ch-TOG antibody) at dilution of 1:50 and Alexa Fluor 488-conjugated AffiniPure Goat Anti-Rabbit IgG(H+L).



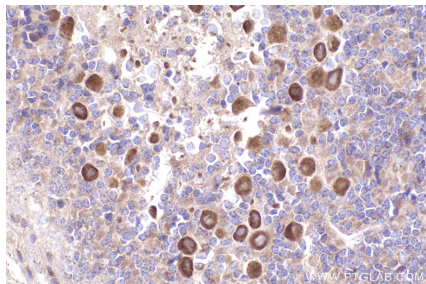
Various lysates were subjected to SDS PAGE followed by western blot with 26457-1-AP (Ch-TOG antibody) at dilution of 1:3000 incubated at room temperature for 1.5 hours.



Various lysates were subjected to SDS PAGE followed by western blot with 26457-1-AP (Ch-TOG antibody) at dilution of 1:3000 incubated at room temperature for 1.5 hours.



Immunohistochemical analysis of paraffin-embedded mouse cerebellum tissue slide using 26457-1-AP (Ch-TOG antibody) at dilution of 1:1000 (under 10x lens). Heat mediated antigen retrieval with Tris-EDTA buffer (pH 9.0).



Immunohistochemical analysis of paraffin-embedded mouse cerebellum tissue slide using 26457-1-AP (Ch-TOG antibody) at dilution of 1:1000 (under 40x lens). Heat mediated antigen retrieval with Tris-EDTA buffer (pH 9.0).