

For Research Use Only

# GMAP-210 Polyclonal antibody

Catalog Number: 26456-1-AP

Featured Product

4 Publications



## Basic Information

**Catalog Number:**

26456-1-AP

**Size:**

700 µg/ml

**Source:**

Rabbit

**Isotype:**

IgG

**Immunogen Catalog Number:**

AG13867

**GenBank Accession Number:**

BC002656

**GeneID (NCBI):**

9321

**UNIPROT ID:**

Q15643

**Full Name:**

thyroid hormone receptor interactor  
11

**Calculated MW:**

1979 aa, 228 kDa

**Observed MW:**

230 kDa

**Purification Method:**

Antigen affinity purification

**Recommended Dilutions:**

WB 1:500-1:1000

IHC 1:250-1:1000

IF 1:50-1:500

## Applications

**Tested Applications:**

IF/ICC, IHC, WB, ELISA

**Cited Applications:**

WB, IF

**Species Specificity:**

human

**Cited Species:**

human

**Note-IHC: suggested antigen retrieval with TE buffer pH 9.0; (\*) Alternatively, antigen retrieval may be performed with citrate buffer pH 6.0**

**Positive Controls:**

WB : HeLa cells, HL-60 cells

IHC : human thyroid cancer tissue,

IF : HeLa cells,

## Background Information

Golgi microtubule-associated protein 210 (GMAP-210), also referred to as CEV14, Trip11 or Trip230, is a peripheral Golgi protein that localizes to the cis-Golgi network. GMAP-210 is a 1,978 amino acid coiled-coil member of the golgin family of proteins. Microtubule ends bind to GMAP-210 which functions to link the cis-Golgi network to the minus ends of centrosome-nucleated microtubules. This interaction may be essential for the proper morphology and structural maintenance of the Golgi apparatus. GMAP-210 also associates with thyroid hormone receptor. Overexpression of GMAP-210 disrupts the micro-tubule network and causes a significant enlargement and fragmentation of the Golgi apparatus; it also blocks anterograde and retrograde transport between the ER and the Golgi apparatus.

## Notable Publications

Author	Pubmed ID	Journal	Application
Jennifer Y Liu	34533192	Biol Open	WB
Priyanka Upadhyai	34057271	Hum Mutat	WB,IF
Antoine Reynaud	35714773	J Biol Chem	IF

## Storage

**Storage:**

Store at -20°C. Stable for one year after shipment.

**Storage Buffer:**

PBS with 0.02% sodium azide and 50% glycerol pH 7.3.

Aliquoting is unnecessary for -20°C storage

For technical support and original validation data for this product please contact:

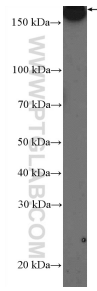
T: 4006900926

E: Proteintech-CN@ptglab.com

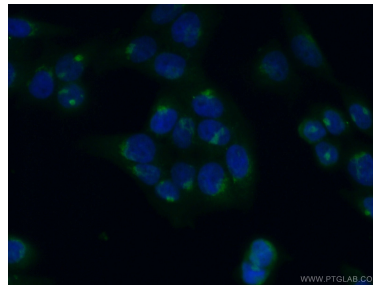
W: ptgcn.com

**This product is exclusively available under Proteintech Group brand and is not available to purchase from any other manufacturer.**

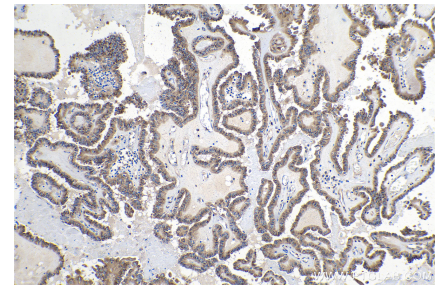
## Selected Validation Data



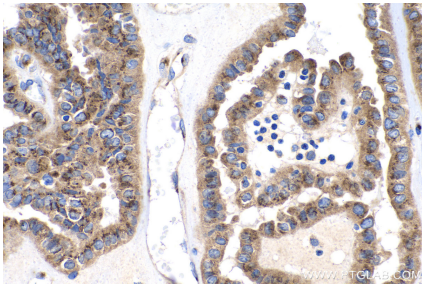
HeLa cells were subjected to SDS PAGE followed by western blot with 26456-1-AP (GMAP-210 Antibody) at dilution of 1:600 incubated at room temperature for 1.5 hours.



Immunofluorescent analysis of (4% PFA) fixed HeLa cells using 26456-1-AP (GMAP-210 antibody) at dilution of 1:50 and Alexa Fluor 488-conjugated AffiniPure Goat Anti-Rabbit IgG(H+L).



Immunohistochemical analysis of paraffin-embedded human thyroid cancer tissue slide using 26456-1-AP (GMAP-210 antibody) at dilution of 1:500 (under 10x lens). Heat mediated antigen retrieval with Tris-EDTA buffer (pH 9.0).



Immunohistochemical analysis of paraffin-embedded human thyroid cancer tissue slide using 26456-1-AP (GMAP-210 antibody) at dilution of 1:500 (under 40x lens). Heat mediated antigen retrieval with Tris-EDTA buffer (pH 9.0).