

For Research Use Only

LHCGR Polyclonal antibody

Catalog Number: 26424-1-AP

Featured Product

2 Publications



Basic Information

Catalog Number:

26424-1-AP

Size:

600 ug/ml

Source:

Rabbit

Isotype:

IgG

Immunogen Catalog Number:

AG19259

GenBank Accession Number:

BC157028

GeneID (NCBI):

3973

UNIPROT ID:

P22888

Full Name:

LHCGR

Calculated MW:

699 aa, 79 kDa

Observed MW:

100 kDa

Purification Method:

Antigen affinity purification

Recommended Dilutions:

WB 1:500-1:2000

IHC 1:100-1:4000

IF-P 1:50-1:500

Applications

Tested Applications:

WB, IHC, IF-P, ELISA

Cited Applications:

WB, IF

Species Specificity:

human, mouse

Cited Species:

mouse

Positive Controls:

WB : mouse ovary tissue,

IHC : human ovary cancer tissue, human ovary tissue,
human thyroid cancer tissue, mouse ovary tissue

IF-P : mouse ovary tissue,

Note-IHC: suggested antigen retrieval with TE buffer pH 9.0; (*) Alternatively, antigen retrieval may be performed with citrate buffer pH 6.0

Background Information

LHCGR, also known as LHR or LSHR, belongs to the rhodopsin-like family of G protein-coupled receptors (GPCRs) and plays a crucial role in the regulation of gonadal functions by stimulating steroidogenesis in response to luteinizing hormone (LH) or hCG (PMID: 15866423). Mutations in LHCGR gene result in familial male-limited precocious puberty, Leydig cell hypoplasia, and empty follicle syndrome (PMID: 30711030). LHCGR protein consists of 699 amino acids with a calculated molecular weight of 79 kDa. Due to massive glycosylation, the molecular mass of the mature LHCGR is higher (85-100 kDa) than the predicted molecular protein mass of 79 kDa (PMID: 23686864; 15866423; 29075189; 15969756).

Notable Publications

Author	Pubmed ID	Journal	Application
Shi-Min Wang	35689841	Biochem Biophys Res Commun	WB,IF
Nengliang Duan	39252136	Biol Res	IF

Storage

Storage:

Store at -20°C. Stable for one year after shipment.

Storage Buffer:

PBS with 0.02% sodium azide and 50% glycerol pH 7.3.

Aliquoting is unnecessary for -20°C storage

For technical support and original validation data for this product please contact:

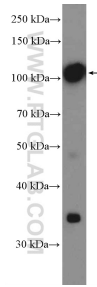
T: 4006900926

E: Proteintech-CN@ptglab.com

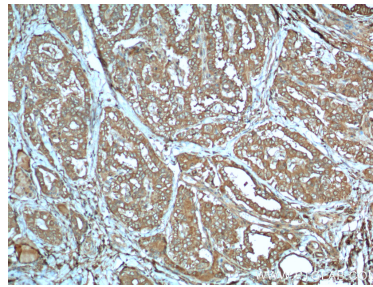
W: ptgcn.com

This product is exclusively available under Proteintech Group brand and is not available to purchase from any other manufacturer.

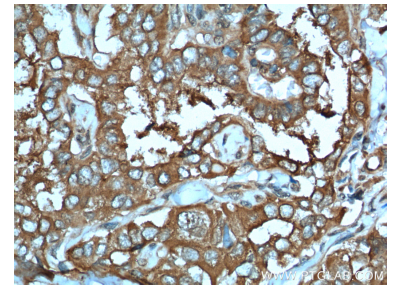
Selected Validation Data



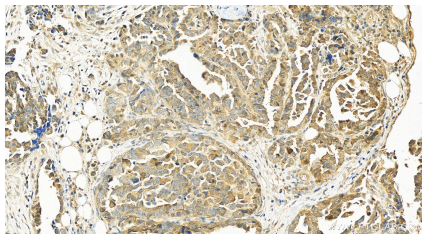
mouse ovary tissue were subjected to SDS PAGE followed by western blot with 26424-1-AP (LHCGR Antibody) at dilution of 1:1000 incubated at room temperature for 1.5 hours.



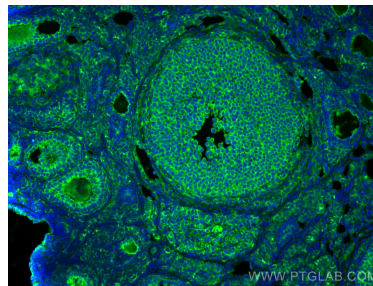
Immunohistochemical analysis of paraffin-embedded human thyroid cancer tissue slide using 26424-1-AP (LHCGR Antibody) at dilution of 1:100 (under 10x lens). Heat mediated antigen retrieval with Tris-EDTA buffer (pH 9.0).



Immunohistochemical analysis of paraffin-embedded human thyroid cancer tissue slide using 26424-1-AP (LHCGR Antibody) at dilution of 1:100 (under 40x lens). Heat mediated antigen retrieval with Tris-EDTA buffer (pH 9.0).



Immunohistochemical analysis of paraffin-embedded human ovarian cancer slide using 26424-1-AP (LHCGR antibody) at dilution of 1:4000 (under 20x lens). Heat mediated antigen retrieval with Tris-EDTA buffer (pH 9.0).



Immunofluorescent analysis of (4% PFA) fixed mouse ovary tissue using LHCGR antibody (26424-1-AP) at dilution of 1:200 and CoraLite®488-Conjugated AffiniPure Goat Anti-Rabbit IgG(H+L).