

For Research Use Only

VEGFR2/KDR Polyclonal antibody

Catalog Number: 26415-1-AP

Featured Product

121 Publications



Basic Information

Catalog Number:

26415-1-AP

Concentration:

750 ug/ml

Source:

Rabbit

Isotype:

IgG

Immunogen Catalog Number:

AG24589

GenBank Accession Number:

BC131822

GeneID (NCBI):

3791

UNIPROT ID:

P35968

Full Name:

kinase insert domain receptor (a type III receptor tyrosine kinase)

Calculated MW:

1356 aa, 152 kDa

Observed MW:

150 kDa, 230 kDa

Purification Method:

Antigen affinity purification

Recommended Dilutions:

WB 1:1000-1:8000

IP 0.5-4.0 ug for 1.0-3.0 mg of total protein lysate

IHC 1:50-1:500

Applications

Tested Applications:

WB, IHC, IP, ELISA

Cited Applications:

WB, IHC, IF, IP, CoIP

Species Specificity:

human, mouse, rat

Cited Species:

human, mouse, rat, pig, sheep

Note-IHC: suggested antigen retrieval with TE buffer pH 9.0; (*) Alternatively, antigen retrieval may be performed with citrate buffer pH 6.0

Positive Controls:

WB: human placenta tissue, mouse heart tissue, mouse lung tissue, mouse placenta tissue, rat lung tissue

IP: human placenta tissue, rat skeletal muscle tissue

IHC: human placenta tissue,

Background Information

KDR, also named as VEGFR-2, FLK1 and CD309, is a receptor for VEGF or VEGFC. KDR which belongs to the protein kinase superfamily, has a tyrosine-protein kinase activity. The VEGF-kinase ligand/receptor signaling system plays a key role in vascular development and regulation of vascular permeability. In case of HIV-1 infection, the interaction with extracellular viral Tat protein seems to enhance angiogenesis in Kaposi's sarcoma lesions. KDR functions as the main mediator of VEGF-induced endothelial proliferation, survival, migration, tubular morphogenesis and sprouting. Mutations of this gene are implicated in infantile capillary hemangiomas.

Notable Publications

Author	Pubmed ID	Journal	Application
Xiao-Qin Zhu	33456987	J Gastrointest Oncol	IHC
Qiang Ma	31562866	Eur J Pharmacol	WB
Yongyun Li	34536440	J Mol Cell Cardiol	IF

Storage

Storage:

Store at -20°C. Stable for one year after shipment.

Storage Buffer:

PBS with 0.02% sodium azide and 50% glycerol, pH7.3

Aliquoting is unnecessary for -20°C storage

For technical support and original validation data for this product please contact:

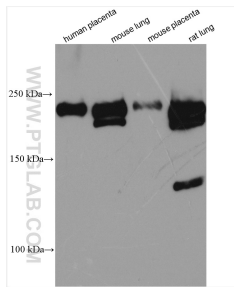
T: 4006900926

E: Proteintech-CN@ptglab.com

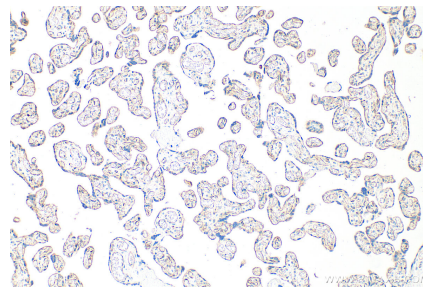
W: ptgcn.com

This product is exclusively available under Proteintech Group brand and is not available to purchase from any other manufacturer.

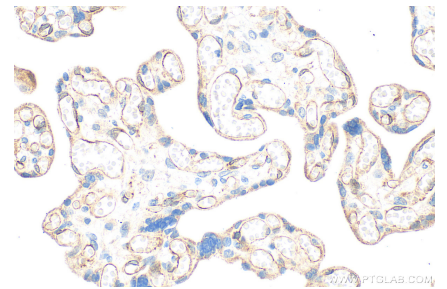
Selected Validation Data



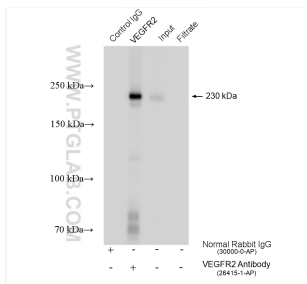
Various lysates were subjected to SDS PAGE followed by western blot with 26415-1-AP (VEGFR2 antibody) at dilution of 1:4000 incubated at room temperature for 1.5 hours.



Immunohistochemical analysis of paraffin-embedded human placenta tissue slide using 26415-1-AP (VEGFR2/KDR antibody) at dilution of 1:200 (under 10x lens). Heat mediated antigen retrieval with Tris-EDTA buffer (pH 9.0).



Immunohistochemical analysis of paraffin-embedded human placenta tissue slide using 26415-1-AP (VEGFR2/KDR antibody) at dilution of 1:200 (under 40x lens). Heat mediated antigen retrieval with Tris-EDTA buffer (pH 9.0).



IP result of anti-VEGFR2/KDR (IP:26415-1-AP, 4ug; Detection:26415-1-AP 1:3000) with human placenta tissue lysate 600 ug.